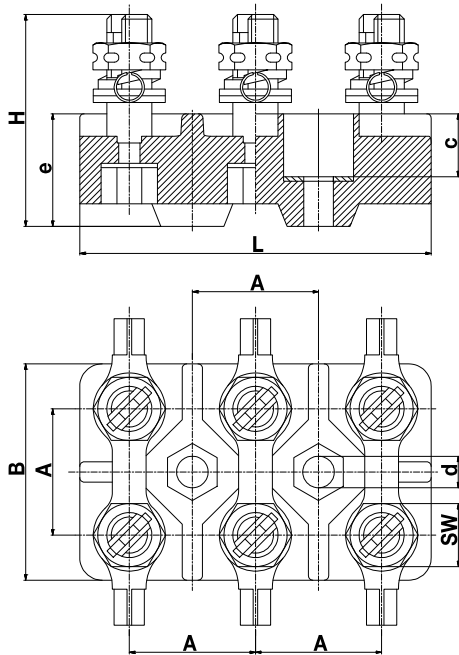
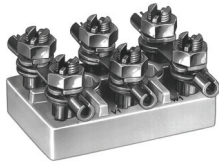


Motor terminal boards

1071-A / 1072-A

accord. to DIN 46295, complete with terminal heads, jumpers and cable lugs



max. terminal space:
1071: 3,1 x 6,2 mm
1072: 4,3 x 7,6 mm

Dimensions (mm)

Type	DIN	L	B	H	A	c	d	e	SW
1071-A	KS 8	64	40	42	23	14	6,3	25	12
1072-A	KS 10	78	48	45	28	14	6,6	25	14

The steatite mount complies with most stringent requirements in respect of dielectric strength and temperature resistance. The buttress-thread slotted-post terminals are secured to prevent them from twisting, similar to DIN 22412, with terminal head. They are available in 4 different variations as standard. Variation A is equivalent to DIN 46295.

The slotted-post terminals are fitted electrically. This eliminates the possibility of the slotted bolts coming loose even when subjected to extreme mechanical vibration. The recesses of the two screw holes are designed with a square or hexagon configuration, in which the washers are cemented in to prevent them from twisting, for reliable securing of the motor terminal boards at the motor.

Variations

- ...A: complete with terminal head, jumpers and cable lugs
- ...B: only with terminal head (without jumpers and cable lugs)
- ...C: with terminal head and cable lug (without jumpers)
- ...D: with terminal head and jumpers (without cable lugs)

Part Numbers

Type	Part Numbers	Pcs
1071-A	10.683.002	20
1072-A	10.683.003	8

General Information

No. of poles	6
Additional Information	Installation instructions in accordance with DIN 46295: The best way to secure the terminal boards is to use cylinder head screws DIN 84 and lock washers DIN 7980. Flexible shims must be used to compensate for irregularities. The terminal heads must be firmly tightened without using force.

Technical Data

Rated Cross Section	1071-A: 2x4 mm ² / 2x11 AWG 1072-A: 2x6 mm ² / 2x9 AWG
Rated Voltage	1071: 500 V 1072: 750 V
Rated Current	1071: 34 A 1072: 44 A

Material

Base material	Unglazed steatit, KER 220 DIN 40685
Jumpers	Tin plated brass
Pressure bolt	Nickel plated brass
Cabel socket	Tin plated brass
Nut	Zinc plated steel
Slotted Bolt	Nickel plated brass
S-Spring	Zinc plated steel

Options / Accessories

- Instead of solder cable lugs there can also be mounted crimping cable lugs according to DIN 46295 Part 3. Indication of the size required, see accessories crimping cable lugs.