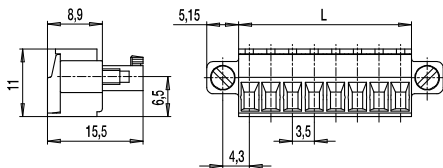


PCB Plug Connector System Series 110

110-A-115

Screw connection, elevator style, with connecting flanges



The PCB plug connectors of the series of 110 offer remarkable connection data (1.5 mm² / 160 V-III-3 / 8 A) for their small dimensions.

The plug connectors are provided with screw terminals working on the lift principle, which ensures a high pressure fitting and a reliable wire protection even after countless disconnections.

The compact housings in 3.5 mm centre - to - centre spacing are available in pole lengths from 2 to 22. They are available in different designs with perpendicular, parallel or diagonal plug direction to the printed circuit board.

The 110-A-115 is a version with connecting flanges on both sides of the connector. Connecting flanges extend the range of applications additionally.

Corresponding pin strips with laterally attached flange execution possess screw locking thread inserts with whom the connection can be fixed vibration-proof to prevent them from being shaken apart.

The contact strips are provided with a coding feature according to standard, which can be cut off if necessary.

Part Numbers

No. of poles	110-A-115	Length	Pcs
2	15.840.077	7,00	100
3	15.840.078	10,50	100
4	15.840.079	14,00	100
5	15.840.080	17,50	50
6	15.840.081	21,00	50
7	15.840.082	24,50	50
8	15.840.083	28,00	50
9	15.840.084	31,50	50
10	15.840.085	35,00	50
11	15.840.086	38,50	50
12	15.840.087	42,00	50
13	15.840.088	45,50	50
14	15.840.089	49,00	50
15	15.840.090	52,50	50
16	15.840.091	56,00	50
17	15.840.092	59,50	50
18	15.840.093	63,00	50
19	15.840.094	66,50	50
20	15.840.095	70,00	50
21	15.840.096	73,50	50
22	15.840.097	77,00	50

General Information

Centre to centre spacing	3,5 mm
No. of poles	2 - 22
Usable with	all pin strips series 110 with connecting flanges
Accessories	Self-adhesive marking strip BST-3,5

Technical Data

Clamping Range	solid / flexible / AWG 0,14 - 1,5 mm ² / 0,14 - 1,5 mm ² / 28 - 16 AWG		
Rated Cross Section	1,5 mm ²		
Wire Stripping Length	6,5 mm ± 0,5 mm		
Overvoltage Category	III	III	II
Pollution Severity Level	3	2	2
Rated Voltage	160 V	160 V	320 V
Rated Impulse Voltage	2,5 kV	2,5 kV	2,5 kV
Rated Insulation Voltage	130 V acc. to EN 60998-1		
Rated Current	8 A		
Torque	0,2 Nm		

Material

Moulding	PA, grey, V-0
Comparative Tracking Index	CTI ≥ 600
Insulating Group	I
Temperature Range	-40°C up to 100°C
Terminal Body	Nickel plated brass
Pressure clamp	Tin plated bronze
Screw	M2; tin plated bronze
Spring	Tin plated bronze

Approvals

	Current	Voltage	Group	AWG	Nm
	8	300	B, D	30 - 16	0,2
	8	300	B	30 - 16	0,2

Options / Accessories

- Consecutive numbering
- Special marking accord. drawing
- Self-adhesive marking strip
- Center-to-center spacing 7 mm for larger clearance and creepage distances
- Strain relief