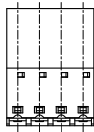
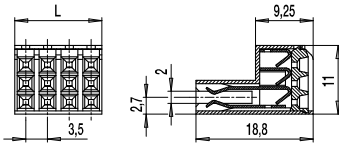
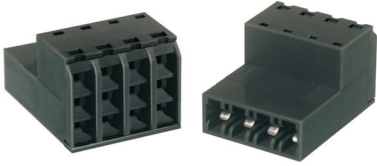


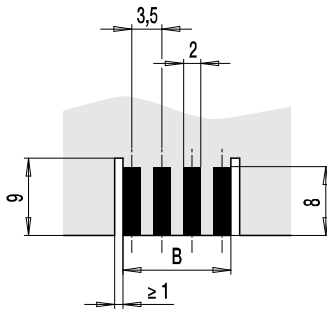
Plug connector

110-FP3-211

Spring contact, tribble connection, direct connection to PCB



PCB Layout



$$B = (\text{Number of poles} \times 3,5) - 1,5$$

Due to the pitch of 3,5 mm, plug connectors of series 110 are particularly suitable for confined spaces. The version 110-FP3-211 with spring connection is suitable for direct connection to PC boards. Each pole contains three separate clamping units one on top of the other. Individual wires can be connected without having to use a tool. The wires disconnect by simultaneous twisting and pulling.

Slots corresponding with the housing side walls or the PC board width determine the correct plug connector position on the conductor paths. The board design determines whether the contacting is single- or double-sided.

Slots between the plug connections not only to increase the creepage distances in the housing but also serve as receptacle for coding keys.

Part Numbers

No. of poles	110-FP3-211	Length	Pcs
2	10.842.372	7,00	200
3	10.842.373	10,50	200
4	10.842.374	14,00	100
5	10.842.375	17,50	100
6	10.842.376	21,00	100
8	10.842.378	28,00	50
10	10.842.380	35,00	50
12	10.842.382	42,00	50

further number of poles on request

General Information

Pitch	3,5 mm
No. of poles	2 - 12
Usable with	copper-covered single- or double-sided PCB's
Areas of application	Telecommunication technology, house telephones, intercoms

Technical Data

Clamping Range	<i>solid / flexible / AWG</i> 0,2 - 0,5 mm ² / 24 - 20 AWG nur starre Leiter ; only solid wires
Wire Stripping Length	6 mm
Overvoltage Category	II
Pollution Severity Level	2
Rated Voltage	320 V
Rated Impulse Voltage	2,5 kV
Rated Insulation Voltage	130 V acc. to EN 60998-1
Rated Current	3 A for one side PCB contact 6 A for two side PCB contact
PCB thickness	1,4 - 1,8 mm

Material

Moulding	PA, grey, V-0
Comparative Tracking Index	CTI ≥ 600
Insulating Group	I
Temperature Range	-40°C up to 100°C
Contact elements	Copper alloy, tin plated

Options / Accessories

- Consecutive numbering
- Special marking accord. drawing
- Self-adhesive marking strip BST-3,50
- Coding keys 110-AP, Part-No.: 10.496.028
- Factory-assembled coding keys on request