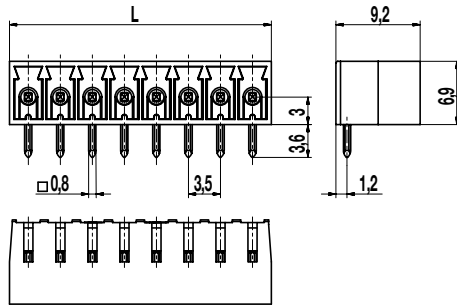
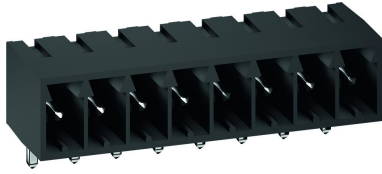


## Pin strip 110-M-111

Plug-in direction parallel to PCB, flat side walls



### Part Numbers

No. of poles	110-M-111	Length	PU
2	10.841.027	7,60	200
3	10.841.028	11,10	200
4	10.841.029	14,60	100
5	10.841.030	18,10	100
6	10.841.031	21,60	100
7	10.841.032	25,10	50
8	10.841.033	28,60	50
9	10.841.034	32,10	50
10	10.841.035	35,60	50
11	10.841.036	39,10	50
12	10.841.037	42,60	50

further number of poles on request

### General Information

Pitch	3,5 mm
No. of poles	2 - 12
Usable with	all plug connectors of series 110
Additional Information	For versions with connecting flanges see 110-M-215. For versions with false insertion prevention see 110-M-211.




### Technical Data

Overvoltage Category	III	III	II
Pollution Severity Level	3	2	2
Rated Voltage	160 V	160 V	320 V
Rated Impulse Voltage	2,5 kV	2,5 kV	2,5 kV
Rated Insulation Voltage	130 V acc. to EN 60998-1		
Rated Current	8 A		
Hole in PCB	ø 1,3 mm		

### Material

Moulding	PA, grey, V-0
Comparative Tracking Index	CTI ≥ 600
Insulating Group	I
Temperature Range	-40°C up to 100°C
Solder pin	0,8 x 0,8 mm; tin plated brass

### Approvals

	Current	Voltage	Group	AWG	Nm
	8	300	B, D		
	8	300	B		
					

### Options / Accessories

- Consecutive numbering
- Special marking according to drawing
- Self-adhesive marking strip
- Pitch of 7 mm for larger clearance and creepage distances
- Coding elements 120-K