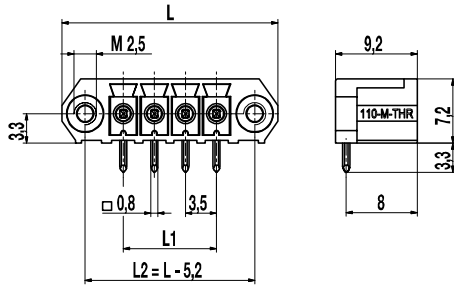
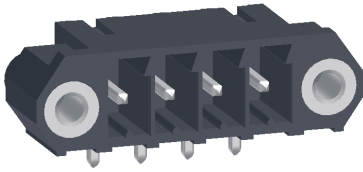


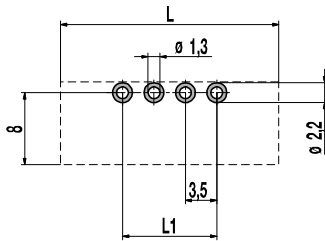
Pin strip for THR

110-M-215-THR

Plug-in direction parallel to PCB, with connecting flanges



PCB Layout



L1 = (No. of poles - 1) x pitch
Solder paste thickness: 0,15 - 0,2 mm

The 110-M-215-THR is a pin strip, suitable for the reflow soldering process, in horizontal design with a pitch of 3,5 mm and available in 2- to 12-pole design.

It is compatible to all standard plugs of the series 110 as well as to the Insulation Displacement Connector 110-A-IDC.

This version has connecting flanges with thread inserts M2,5 (<0,3 Nm) on both sides of the connector which extend the range of applications additionally.

The housing of the pin strips correspond to the requirements of the increased soldering temperatures in the lead free soldering process. Spacers, so-called stand-offs, ensure a better hot-air circulation during the reflow soldering process in the convection oven and allow an improved visual control of the solder joint.

All THR pin strips of this series are packed in Tape-on-Reel for automatic pick & place and are equipped with high temperature resistant pick caps which can easily be removed after the soldering process.

Part Numbers

No. of poles	110-M-215-THR	Length	Pcs
2	10.841.352	17,30	100
3	10.841.353	20,80	100
4	10.841.354	24,30	100
5	10.841.355	27,80	50
6	10.841.356	31,30	50
8	10.841.358	38,30	50
10	10.841.360	45,30	50
11	10.841.361	48,80	50
12	10.841.362	52,30	50

General Information

Pitch	3,5 mm
No. of poles	2 - 12
Usable with	all plug connectors of series 110 with connecting flanges

Technical Data

Overvoltage Category	III	III	II
Pollution Severity Level	3	2	2
Rated Voltage	160 V	160 V	320 V
Rated Impulse Voltage	2,5 kV	2,5 kV	2,5 kV
Rated Insulation Voltage	130 V acc. to EN 60998-1		
Rated Current	8 A		
Soldering process	Wave solder & reflow solder		
Hole in PCB	ø 1,3 mm		
PCB thickness	Wave solder max. 1,6 mm; reflow solder 1,6 mm - 3,2 mm		

Material

Moulding	PA HT, black, V-0
Comparative Tracking Index	CTI ≥ 600
Insulating Group	I
Temperature Range	-40°C up to 150°C; reflow solder temperature (Peak) max. 260°C (15-30 s)
Solder pin	0,8 x 0,8 mm; tin plated brass

Approvals

	Current	Voltage	Group	AWG	Nm
	8	300	B, D		
	8	300	B		

Options / Accessories

- Consecutive numbering
- Special marking according to drawing
- Self-adhesive marking strip BST-3,50 [1]
- Coding elements 120-K [1]

Part Numbers: Tape-on-Reel

No. of poles	110-M-215-THR	Tape Width	Tape Height	Pcs
2	10.841.352.A00	32 mm	11,8 mm	500
3	10.841.353.A00	32 mm	11,8 mm	500

further number of poles on request

[1] To be fitted after reflow soldering process