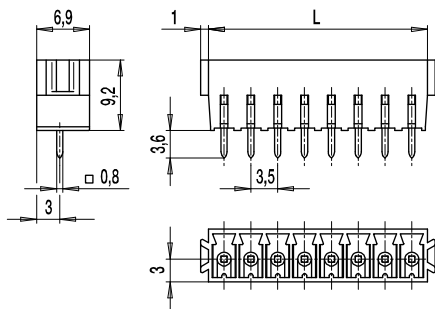
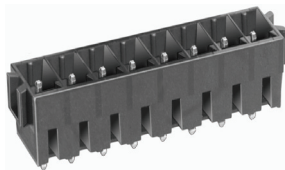


# PCB Plug Connector System Series 110

## 110-M-221

Pin strip



The PCB plug connectors of the series of 110 offer remarkable connection data (1.5 mm<sup>2</sup> / 160 V-III-3/8 A) for their small dimensions.

In combination with the appropriate plug connector, they guarantee reliable wire connection for all kinds of wires.

The compact housings in 3.5 mm centre - to - centre spacing are available in pole lengths from 2 to 24.

The plug direction of the 110-M-221 is perpendicular to the printed circuit board.

The pin strips possess slots for the admission of the coding elements 120-K.

Laterally attached dovetail expansions prevent reliably incorrect plugging.

### Part Numbers

No. of poles	110-M-221	Length	Pcs
2	20.841.002	7,00	200
3	20.841.003	10,50	200
4	20.841.004	14,00	100
5	20.841.005	17,50	100
6	20.841.006	21,00	100
7	20.841.007	24,50	50
8	20.841.008	28,00	50
9	20.841.009	31,50	50
10	20.841.010	35,00	50
11	20.841.011	38,50	50
12	20.841.012	42,00	50
13	20.841.013	45,50	50
14	20.841.014	49,00	50
15	20.841.015	52,50	50
16	20.841.016	56,00	50
17	20.841.017	59,50	50
18	20.841.018	63,00	50
19	20.841.019	66,50	50
20	20.841.020	70,00	50
21	20.841.021	73,50	50
22	20.841.022	77,00	50
23	20.841.023	80,50	50
24	20.841.024	84,00	50

### General Information

Centre to centre spacing	3,5 mm
No. of poles	2 - 24
Usable with	all plugs of series 110
Accessories	Self-adhesive marking strip BST-3,5; coding element 120-K
Additional Information	Version with connecting flanges see also 110-M-225

### Technical Data

Overvoltage Category	III	III	II
Pollution Severity Level	3	2	2
Rated Voltage	160 V	160 V	320 V
Rated Impulse Voltage	2,5 kV	2,5 kV	2,5 kV
Rated Insulation Voltage	130 V acc. to EN 60998-1		
Rated Current	8 A		
Hole in PCB	ø 1,3 mm		

### Material

Moulding	PA, grey, V-0
Comparative Tracking Index	CTI ≥ 600
Insulating Group	I
Temperature Range	-40°C up to 100°C
Solder pin	0,8 x 0,8 mm; tin plated brass

### Approvals

	Current	Voltage	Group	AWG	Nm
	8	300	B,D		
	8	300	B		

### Options / Accessories

- Consecutive numbering
- Special marking acc. to drawing
- Self-adhesive marking strip
- Center-to-center spacing 7 mm for larger clearance and creepage distances
- Coding elements 120-K
- With smooth side wall