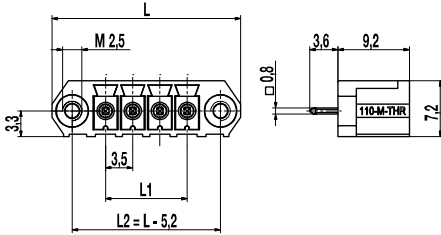
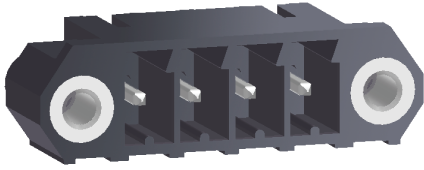


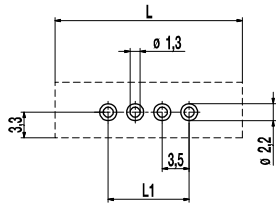
# Plug Connector System Series 110 for THR

## 110-M-225-THR

Pin strip with connecting flanges



### PCB Layout



L1 = (No. of Poles - 1) x pitch  
Solder paste thickness: 0,15 - 0,2 mm

The 110-M-225-THR is a pin strip, suitable for the reflow soldering process, in vertical design with 3,5 mm pitch and available from 2 – 12 poles. It is compatible to all standard plugs of the series 110 as well as to the Insulation Displacement Connector 110-A-IDC.

The housing of the pin strips correspond to the requirements of the increased soldering temperatures in the lead free soldering process. Spacers, so-called stand-offs, ensure a better hot-air circulation during the reflow soldering process in the convection oven and allow an improved visual control of the solder joint.

All THR pin strips of this series are packed Tape on Reel for the assembling with pick & place machines. They are equipped with high temperature resistant Pick Caps, which can comfortably be removed after the soldering process.

This version has connecting flanges on both sides of the connector to extend the range of applications additionally.

Descriptions for the application of the flange execution see 110-M-225.

### Part Numbers

No. of poles	110-M-225-THR	Length	Pcs
2	20.841.352	17,30	100
3	20.841.353	20,80	100
4	20.841.354	24,30	100
5	20.841.355	27,80	50
6	20.841.356	31,30	50
8	20.841.358	38,30	50
10	20.841.360	45,30	50
11	20.841.361	48,80	50
12	20.841.362	52,30	50

### General Information

Centre to centre spacing	3,5 mm
No. of poles	2 - 12
Usable with	all plugs of series 110 with connecting flanges
Accessories	Self-adhesive marking strip BST-3,5; coding element 120-K

### Technical Data

Overvoltage Category	III	III	II
Pollution Severity Level	3	2	2
Rated Voltage	160 V	160 V	320 V
Rated Impulse Voltage	2,5 kV	2,5 kV	2,5 kV
Rated Insulation Voltage	130 V acc. to EN 60998-1		
Rated Current	8 A		
Soldering process	Wave solder & reflow solder		
Hole in PCB	ø 1,3 mm		
PCB thickness	Wave solder max. 1,6 mm; reflow solder 1,6 mm - 3,2 mm		

### Material

Moulding	PA HT, black, V-0
Comparative Tracking Index	CTI ≥ 600
Insulating Group	I
Temperature Range	-40°C up to 150°C; reflow solder temperature (Peak) max. 260°C (15-30 s)
Solder pin	0,8 x 0,8 mm; tin plated brass

### Approvals

	Current	Voltage	Group	AWG	Nm
	8	300	B, D		
	8	300	B		

### Options / Accessories

- Consecutive numbering
- Special marking accord. drawing
- Self-adhesive marking strip
- Coding elements 120-K

### Part Numbers: Tape-on-Reel

No. of poles	110-M-225-THR	Tape Width	Tape Height	Pcs
3	20.841.353.A00	56 mm	14,9 mm	300
4	20.841.354.A00	56 mm	14,9 mm	300
5	20.841.355.A00	56 mm	14,9 mm	300
6	20.841.356.A00	56 mm	14,9 mm	300
7	20.841.357.A00	56 mm	14,9 mm	300
8	20.841.358.A00	56 mm	14,9 mm	300

further number of poles on request