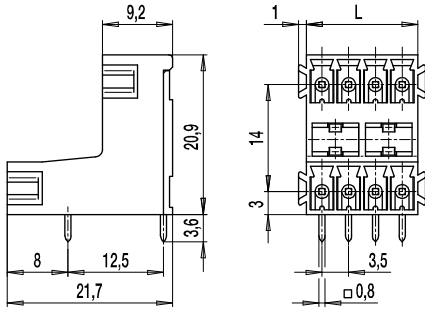


Pin strip 110-S-211

Staggered two-tier version, plug-in direction parallel to PCB, with false insertion prevention



Pin strips of series 110 offer remarkable connection data (1,5 mm² / 160 V-III-3 / 8 A) for their small dimensions. The compact housings of these two-tier versions with a pitch of 3,5 mm are available with 4 to 48 poles. The plug direction of the 110-S-211 is parallel to the PC board. The pin strips feature slots to accommodate the coding elements 120-K. Laterally attached dovetail expansions reliably prevent false insertion.

Part Numbers

No. of poles	110-S-211	Length	Pcs
4	10.841.402	7,60	100
6	10.841.403	11,10	100
8	10.841.404	14,60	50
10	10.841.405	18,10	50
12	10.841.406	21,60	50
14	10.841.407	25,10	50
16	10.841.408	28,60	25
18	10.841.409	32,10	25
20	10.841.410	35,60	25
22	10.841.411	39,10	25
24	10.841.412	42,60	25
26	10.841.413	46,10	25
28	10.841.414	49,60	25
30	10.841.415	53,10	25
32	10.841.416	56,60	25
34	10.841.417	60,10	25
36	10.841.418	63,60	25
38	10.841.419	67,10	25
40	10.841.420	70,60	25
42	10.841.421	74,10	25
44	10.841.422	77,60	10
46	10.841.423	81,10	10
48	10.841.424	84,60	10

General Information

Pitch	3,5 mm
No. of poles	4 - 48
Usable with	all plug connectors of series 110
Additional Information	For versions with connecting flanges see 110-S-215

Technical Data

Overvoltage Category	III	III	II
Pollution Severity Level	3	2	2
Rated Voltage	160 V	160 V	320 V
Rated Impulse Voltage	2,5 kV	2,5 kV	2,5 kV
Rated Insulation Voltage	130 V acc. to EN 60998-1		
Rated Current	8 A		
Hole in PCB	ø 1,3 mm		

Material

Moulding	PA, grey, V-0
Comparative Tracking Index	CTI ≥ 600
Insulating Group	I
Temperature Range	-40°C up to 100°C
Solder pin	0,8 x 0,8 mm; tin plated brass

Approvals

	Current	Voltage	Group	AWG	Nm
	8	300	B, D		
	8	300	B		

Options / Accessories

- Consecutive numbering
- Special marking according to drawing
- Self-adhesive marking strip BST-3,50
- Pitch of 7 mm for larger clearance and creepage distances
- Coding elements 120-K