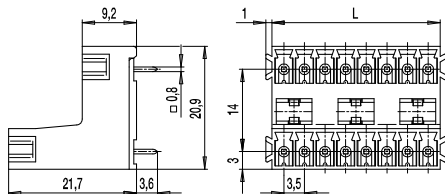
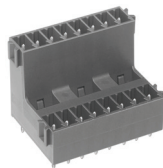


PCB Plug Connector System Series 110

110-S-221

Double row header



The PCB plug connectors of the series of 110 offer remarkable connection data (1.5 mm² / 160 V-III-3 / 8 A) for their small dimensions.

In combination with the appropriate plug connector, they guarantee reliable wire connection for all kinds of wires.

The compact housings of these tier versions in 3.5 mm centre - to - centre spacing are available with 4 to 48 poles (with effectively double the pole density).

The plug direction of the 110-S-221 is perpendicular to the printed circuit board.

The pin strips possess slots for the admission of the coding elements 120-K.

Laterally attached dovetail expansions prevent reliably incorrect plugging.

Part Numbers

| No. of poles | 110-S-221 | Length | Pcs |
|--------------|------------|--------|-----|
| 4 | 20.841.402 | 7,00 | 100 |
| 6 | 20.841.403 | 10,50 | 100 |
| 8 | 20.841.404 | 14,00 | 50 |
| 10 | 20.841.405 | 17,50 | 50 |
| 12 | 20.841.406 | 21,00 | 50 |
| 14 | 20.841.407 | 24,50 | 50 |
| 16 | 20.841.408 | 28,00 | 25 |
| 18 | 20.841.409 | 31,50 | 25 |
| 20 | 20.841.410 | 35,00 | 25 |
| 22 | 20.841.411 | 38,50 | 25 |
| 24 | 20.841.412 | 42,00 | 25 |
| 26 | 20.841.413 | 45,50 | 25 |
| 28 | 20.841.414 | 49,00 | 25 |
| 30 | 20.841.415 | 52,50 | 25 |
| 32 | 20.841.416 | 56,00 | 25 |
| 34 | 20.841.417 | 59,50 | 25 |
| 36 | 20.841.418 | 63,00 | 25 |
| 38 | 20.841.419 | 66,50 | 25 |
| 40 | 20.841.420 | 70,00 | 25 |
| 42 | 20.841.421 | 73,50 | 25 |
| 44 | 20.841.422 | 77,00 | 10 |
| 46 | 20.841.423 | 80,50 | 10 |
| 48 | 20.841.424 | 84,00 | 10 |

General Information

| | |
|--------------------------|---|
| Centre to centre spacing | 3,5 mm |
| No. of poles | 4 - 48 |
| Usable with | all plugs of series 110 |
| Accessories | Self-adhesive marking strip BST-3,5; coding element 120-K |
| Additional Information | Versions with connecting flanges see also 110-S-225 |

Technical Data

| | | | |
|--------------------------|--------------------------|--------|--------|
| Overvoltage Category | III | III | II |
| Pollution Severity Level | 3 | 2 | 2 |
| Rated Voltage | 160 V | 160 V | 320 V |
| Rated Impulse Voltage | 2,5 kV | 2,5 kV | 2,5 kV |
| Rated Insulation Voltage | 130 V acc. to EN 60998-1 | | |
| Rated Current | 8 A | | |
| Hole in PCB | ø 1,3 mm | | |

Material

| | |
|----------------------------|--------------------------------|
| Moulding | PA, grey, V-0 |
| Comparative Tracking Index | CTI ≥ 600 |
| Insulating Group | I |
| Temperature Range | -40°C up to 100°C |
| Solder pin | 0,8 x 0,8 mm; tin plated brass |

Approvals

| | Current | Voltage | Group | AWG | Nm |
|--|---------|---------|-------|-----|----|
| | 8 | 300 | B,D | | |
| | 8 | 300 | B | | |
| | | | | | |

Options / Accessories

- Consecutive numbering
- Special marking accord. drawing
- Self-adhesive marking strip
- Center-to-center spacing 7 mm for larger clearance and creepage distances
- Coding elements 120-K