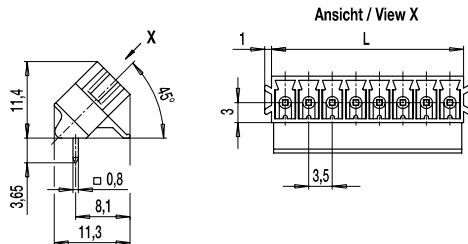
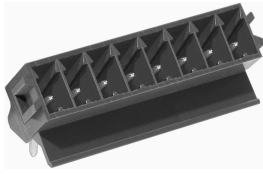


Pin strip 110-V-211

Plug-in direction diagonal 45° to PCB, with false insertion prevention



Pin strips of series 110 offer remarkable connection data (1,5 mm² / 160 V-III-3 / 8 A) for their small dimensions.

In combination with the corresponding plug connectors they guarantee reliable wire connection for all wire types. The compact housings with a pitch of 3.5 mm are available with 2 to 22 poles. The plug direction of the 110-V-211 is diagonal 45° to the PC board.

The pin strips feature slots to accommodate the coding elements 120-K. Laterally attached dovetail expansions reliably prevent false insertion.

Part Numbers

No. of poles	110-V-211	Length	PU
2	10.841.202	7,60	200
3	10.841.203	11,10	200
4	10.841.204	14,60	100
5	10.841.205	18,10	100
6	10.841.206	21,60	100
7	10.841.207	25,10	50
8	10.841.208	28,60	50
9	10.841.209	32,10	50
10	10.841.210	35,60	50
11	10.841.211	39,10	50
12	10.841.212	42,60	50
13	10.841.213	46,10	50
14	10.841.214	49,60	50
15	10.841.215	53,10	50
16	10.841.216	56,60	50
17	10.841.217	60,10	50
18	10.841.218	63,60	50
19	10.841.219	67,10	50
20	10.841.220	70,60	50
21	10.841.221	74,10	50
22	10.841.222	77,60	50
23	10.841.223	81,10	50
24	10.841.224	84,60	50

General Information

Pitch	3,5 mm
No. of poles	2 - 24
Usable with	all plug connectors of series 110




Technical Data

Overvoltage Category	III	III	II
Pollution Severity Level	3	2	2
Rated Voltage	160 V	160 V	320 V
Rated Impulse Voltage	2,5 kV	2,5 kV	2,5 kV
Rated Insulation Voltage	130 V acc. to EN 60998-1		
Rated Current	8 A		
Hole in PCB	ø 1,3 mm		

Material

Moulding	PA, grey, V-0
Comparative Tracking Index	CTI ≥ 600
Insulating Group	I
Temperature Range	-40°C up to 100°C
Solder pin	0,8 x 0,8 mm; tin plated brass

Approvals

	Current [A]	Voltage [V]	Group	AWG	[Nm]
	8	300	B, D		
	8	300	B		
					

Options / Accessories

- Consecutive numbering
- Special marking according to drawing
- Self-adhesive marking strip BST-3,50
- Pitch of 7 mm for larger clearance and creepage distances
- Coding elements 120-K
- With flat side walls
- Special version with connecting flanges 110-V-215