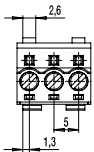
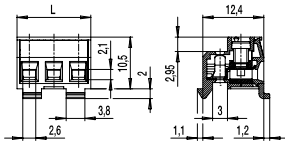


PCB Plug Connector System Series 115

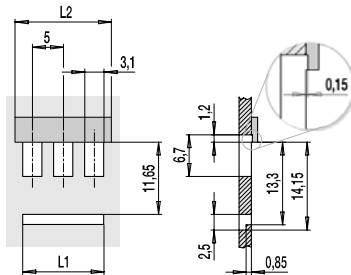
115-F-211

Screw connection, elevator style



$$L1 = (\text{Number of Poles} \times \text{Pitch}) - 1,9$$

$$L2 = (\text{Number of Poles} \times \text{Pitch}) + 0,5$$



This series was specially designed for space-critical applications and offers in spite of its small design a spacious clamping area. Equipped with screw clamps in elevator clamping style, this plug-in connector guarantees highest clamping security for many years.

This version has a footprint and is designed to correspond with base plates. Usually, the PCB with the pin strips will be fitted from above.

Articlenumbers

| No. of poles | 115-F-211 | Length | Pcs |
|--------------|------------|--------|-----|
| 2 | 10.816.026 | 10,00 | 250 |
| 3 | 10.816.027 | 15,00 | 250 |
| 4 | 10.816.028 | 20,00 | 250 |
| 5 | 10.816.029 | 25,00 | 100 |
| 6 | 10.816.030 | 30,00 | 100 |
| 8 | 10.816.032 | 40,00 | 100 |
| 10 | 10.816.034 | 50,00 | 50 |
| 12 | 10.816.036 | 60,00 | 50 |

further number of poles on request

General Information

| | |
|--------------------------|---|
| Centre to centre spacing | 5 mm |
| No. of poles | 2 - 12 |
| Usable with | all Ø 1,3 mm pin strips series 971-SLR, 971-SLR-THR, 971-SLR-SMD |
| Areas of application | For building- and telecommunication technology, in particular for mass production with space-critical applications. |

Technical Data

| | | | |
|--------------------------|---|-------|-------|
| Clamping Range | solid / flexible / AWG | | |
| | 0,14 - 2,5 mm ² / 0,14 - 1,5 mm ² / 26 - 14 AWG | | |
| Rated Cross Section | 1,5 mm ² | | |
| Wire Stripping Length | 6 mm ± 0,5 mm | | |
| Overvoltage Category | III | III | II |
| Pollution Severity Level | 3 | 2 | 2 |
| Rated Voltage | 250 V | 320 V | 630 V |
| Rated Impulse Voltage | 4 kV | 4 kV | 4 kV |
| Rated Insulation Voltage | 250 V acc. to EN 60998-1 | | |
| Rated Current | 10 A | | |
| Torque | 0,5 Nm | | |

Material

| | | | |
|----------------------------|--|--|--|
| Moulding | PA, grey, V-0 | | |
| Comparative Tracking Index | CTI ≥ 600 | | |
| Insulating Group | I | | |
| Temperature Range | -40°C up to 100°C | | |
| Terminal Body | Nickel plated brass | | |
| Pressure clamp | Copper alloy, tin plated | | |
| Screw | M3, zinc plated steel, blue passivated | | |
| Spring | Copper alloy, tin plated | | |

Approvals

| | Current | Voltage | Group | AWG | Nm |
|-----|---------|---------|-------|---------|------|
| UL® | 12 | 300 | B | 26 - 14 | 0,23 |
| | 10 | 300 | D | 26 - 14 | 0,23 |
| SP | 12 | 300 | B | 26 - 14 | 0,22 |
| | 10 | 300 | D,E | 26 - 14 | 0,22 |

Options / Accessories

- Consecutive numbering
- Special marking accord. drawing
- Self-adhesive marking strip