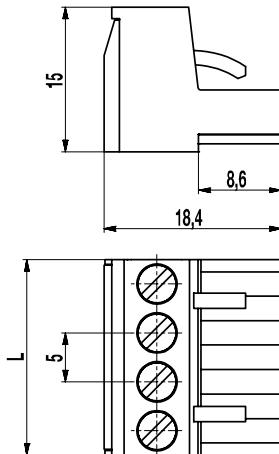
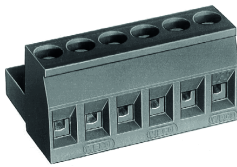


120-A-111

Plug connector
Screw connection



The plug connector 120-A-111, with a pitch of 5 mm, is available in 2- to 24-pole design.

For each pole the plug connector has one trapezoidal coding slot in which the coding elements 120-K can be inserted. The wire entrance is parallel to the plug direction.

The screws are captive.

Part Numbers

No. of poles	120-A-111	Length	PU
2	10.808.002	10,00	200
3	10.808.003	15,00	200
4	10.808.004	20,00	100
5	10.808.005	25,00	100
6	10.808.006	30,00	100
7	10.808.007	35,00	50
8	10.808.008	40,00	50
9	10.808.009	45,00	50
10	10.808.010	50,00	50
11	10.808.011	55,00	50
12	10.808.012	60,00	50
13	10.808.013	65,00	50
14	10.808.014	70,00	50
15	10.808.015	75,00	50
16	10.808.016	80,00	50
17	10.808.017	85,00	50
18	10.808.018	90,00	50
19	10.808.019	95,00	50
20	10.808.020	100,00	50
21	10.808.021	105,00	50
22	10.808.022	110,00	50
23	10.808.023	115,00	50
24	10.808.024	120,00	50

General Information

Pitch	5 mm
No. of poles	2 - 24
Usable with	all pin strips of series 120-M




Technical Data

Clamping Range	<i>solid / flexible / AWG</i>		
	0,2 - 4 mm ² / 0,2 - 2,5 mm ² / 26 - 12 AWG		
Rated Cross Section	2,5 mm ²		
Wire Stripping Length	7 mm ± 0,5 mm		
Overvoltage Category	III	III	II
Pollution Severity Level	3	2	2
Rated Voltage	250 V	320 V	630 V
Rated Impulse Voltage	4 kV	4 kV	4 kV
Rated Insulation Voltage	250 V acc. to EN 60998-1		
Rated Current	12 A		
Torque	0,5 Nm		

Material

Moulding	PA, grey, V-0
Comparative Tracking Index	CTI ≥ 600
Insulating Group	I
Temperature Range	-40°C up to 100°C
Terminal body	Nickel plated brass
Pressure clamp	Tin plated tin bronze
Screw	M3; zinc plated steel, blue passivated
Spring	Tin plated tin bronze

Approvals

	Current [A]	Voltage [V]	Group	AWG	[Nm]
	15	300	B	26 - 12	0,51
	10	300	D	26 - 12	0,51
	15	300	B	26 - 12	0,51
	10	300	D, E	26 - 12	0,51
					

Options / Accessories

- Consecutive numbering
- Special marking according to drawing
- Self-adhesive marking strip BST-5,00
- Pitch of 10 mm for larger clearance and creepage distances
- Coding elements 120-K
- Connectors equipped with coding elements on request
- Version with extended wire entrance
- Strain relief