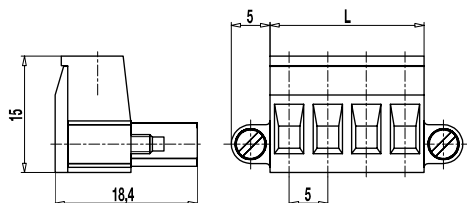


Plug connector 120-A-115

Screw connection, with connecting flanges



The plug connector 120-A-115, with connecting flanges and a pitch of 5 mm, is available in 2- to 22-pole design.

Right-hand and left-hand connecting flanges are equipped with M2.5 screws which can be screwed onto plug connectors and the corresponding series 120 pin strips.

For each pole, the plug connector has one trapezoidal coding slot in which the coding elements 120-K can be inserted.
The wire entrance is parallel to the plug direction.
The screws are captive.

Part Numbers

No. of poles	120-A-115	Length	PU
2	15.808.077	10,00	100
3	15.808.078	15,00	100
4	15.808.079	20,00	100
5	15.808.080	25,00	50
6	15.808.081	30,00	50
7	15.808.082	35,00	50
8	15.808.083	40,00	50
9	15.808.084	45,00	50
10	15.808.085	50,00	50
11	15.808.086	55,00	50
12	15.808.087	60,00	50
13	15.808.088	65,00	50
14	15.808.089	70,00	50
15	15.808.090	75,00	50
16	15.808.091	80,00	50
17	15.808.092	85,00	50
18	15.808.093	90,00	50
19	15.808.094	95,00	50
20	15.808.095	100,00	50
21	15.808.096	105,00	50
22	15.808.097	110,00	50

General Information

Pitch	5 mm
No. of poles	2 - 22
Usable with	all pin strips of series 120

Technical Data

Clamping Range	<i>solid / flexible / AWG</i> 0,2 - 4 mm ² / 0,2 - 2,5 mm ² / 26 - 12 AWG		
Rated Cross Section	2,5 mm ²		
Wire Stripping Length	7 mm ± 0,5 mm		
Overvoltage Category	III	III	II
Pollution Severity Level	3	2	2
Rated Voltage	250 V	320 V	630 V
Rated Impulse Voltage	4 kV	4 kV	4 kV
Rated Insulation Voltage	250 V acc. to EN 60998-1		
Rated Current	12 A		
Torque	0,5 Nm		

Material

Moulding	PA, grey, V-0
Comparative Tracking Index	CTI ≥ 600
Insulating Group	I
Temperature Range	-40°C up to 100°C
Terminal body	Nickel plated brass
Pressure clamp	Tin plated tin bronze
Screw	M3; zinc plated steel, blue passivated
Spring	Tin plated tin bronze

Approvals

	Current	Voltage	Group	AWG	Nm
	15	300	B	26 - 12	0,51
	10	300	D	26 - 12	0,51
	15	300	B	26 - 12	0,51
	10	300	D, E	26 - 12	0,51

Options / Accessories

- Consecutive numbering
- Special marking according to drawing
- Self-adhesive marking strip BST-5,00
- Pitch of 10 mm for larger clearance and creepage distances
- Coding elements 120-K
- Connectors equipped with coding elements on request
- Version with extended wire entrance