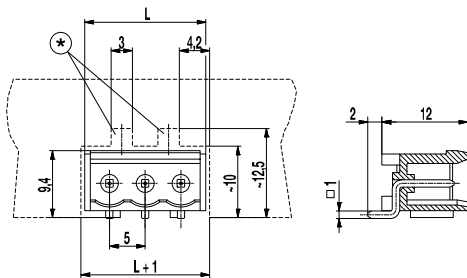
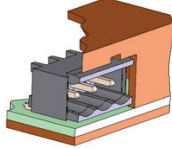
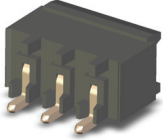
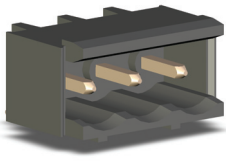


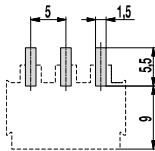
Pin strip for SMD 120-M-211-SMD

Plug-in direction parallel to PCB, with side walls



(*) Please plan for two gaps in the measures of 3 x 2.5 mm in the cut-out of the control panel for the snap-in device of the counterpart

PCB Layout



Solder paste thickness: 0,2 mm

L-shape exposed leads confer an extremely reliable retention force to PCB. This characteristic allows reliable soldering to PCB approaching zero defects for this characteristic and its effects. The top surface of the connector ensures automated Pick&Place-ability for both odd and even pole versions.

Material will handle reflow temperatures well without deforming or melting. Product shall be mounted on PCB to expose connector entry in the cut-off window of the metal or plastic enclosure. This installation mode prevents vertical peel-off stress against the L-shape solder joints during plug-in installation test. Standoffs underneath the molding ensure that connector housing keeps its horizontal position relative to PCB plane.

Packed in magazines, this genuine SMD terminal is suitable for the automatic assembly.

Part Numbers

| No. of poles | 120-M-211-SMD | Length | Pcs |
|--------------|---------------|--------|-----|
| 2 | 30.806.352 | 12,00 | 774 |
| 3 | 30.806.353 | 17,00 | 540 |
| 4 | 30.806.354 | 22,00 | 414 |
| 5 | 30.806.355 | 27,00 | 342 |
| 6 | 30.806.356 | 32,00 | 288 |
| 8 | 30.806.358 | 42,00 | 216 |

further number of poles on request

General Information

| | |
|--------------|-----------------------------------|
| Pitch | 5 mm |
| No. of poles | 2 - 12 |
| Usable with | all plug connectors of series 120 |

Technical Data

| | | | |
|--------------------------|--------------------------|-------|-------|
| Overvoltage Category | III | III | II |
| Pollution Severity Level | 3 | 2 | 2 |
| Rated Voltage | 250 V | 320 V | 630 V |
| Rated Impulse Voltage | 4 kV | 4 kV | 4 kV |
| Rated Insulation Voltage | 250 V acc. to EN 60998-1 | | |
| Rated Current | 12 A | | |
| Soldering process | Reflow solder | | |

Material

| | |
|----------------------------|--|
| Moulding | PA HT, black, V-0 |
| Comparative Tracking Index | CTI ≥ 600 |
| Insulating Group | I |
| Temperature Range | -40°C up to 150°C; reflow solder temperature (Peak) max. 260°C (15-30 s) |
| Solder pin | 1,0 x 1,0 mm; tin plated brass |

Approvals

| | Current | Voltage | Group | AWG | Nm |
|-----|---------|---------|-------|-----|----|
| UL® | 15 | 300 | B | | |
| | 10 | 300 | D, E | | |
| SP® | 15 | 300 | B | | |
| | 10 | 300 | D, E | | |

Options / Accessories

- Consecutive numbering
- Special marking according to drawing
- Self-adhesive marking strip BST-5,00 [1]
- Tape-on-Reel on request

[1] To be fitted after reflow soldering process