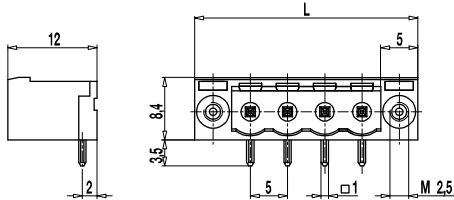
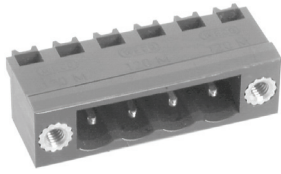


# Pin strip 120-M-215

Plug-in direction parallel to PCB, with connecting flanges



The pin strip 120-M-215, with connecting flanges and a pitch of 5 mm is available in 2- to 12-pole design and can be mounted side-by-side.

Thread insert in the connecting flanges allow to screw the pin strips together with the plug connectors 120-A-115, 120-D-115 and 120-D-125. In addition, these connecting flanges can also be used to mount the pin strip to a housing wall. The plug direction for mating pin strips is parallel to the PCB.

For each pole, the pin strip has one trapezoidal coding slot in which the coding elements 120-K can be inserted.

## Part Numbers

No. of poles	120-M-215	Length	PU
2	15.806.202	20,00	100
3	15.806.203	25,00	100
4	15.806.204	30,00	100
5	15.806.205	35,00	50
6	15.806.206	40,00	50
7	15.806.207	45,00	50
8	15.806.208	50,00	50
9	15.806.209	55,00	50
10	15.806.210	60,00	50
11	15.806.211	65,00	50
12	15.806.212	70,00	50

further number of poles on request

## General Information

Pitch	5 mm
No. of poles	2 - 12
Usable with	all plug connectors of series 120

## Technical Data

Overvoltage Category	III	III	II
Pollution Severity Level	3	2	2
Rated Voltage	250 V	320 V	630 V
Rated Impulse Voltage	4 kV	4 kV	4 kV
Rated Insulation Voltage	250 V acc. to EN 60998-1		
Rated Current	12 A		
Hole in PCB	ø 1,4 mm		

## Material

Moulding	PA, grey, V-0
Comparative Tracking Index	CTI ≥ 600
Insulating Group	I
Temperature Range	-40°C up to 100°C
Solder pin	1,0 x 1,0 mm; tin plated brass

## Approvals

	Current	Voltage	Group	AWG	Nm
	15	300	B		
	10	300	D		
	15	300	B		
	10	300	D, E		

## Options / Accessories

- Consecutive numbering
- Special marking according to drawing
- Self-adhesive marking strip BST-5,00
- Pitch of 10 mm for larger clearance and creepage distances
- Other solder pin lengths on request
- Coding elements 120-K
- Connectors equipped with coding elements on request