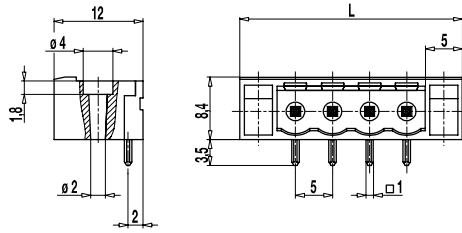


Pin strip 120-M-217

Plug-in direction parallel to PCB, with fastening flanges



The pin strip 120-M-217, with fastening flanges and a pitch of 5 mm, is available in 2- to 12-pole design and can be mounted side-by-side.

By means of the lh and rh fastening flanges, this pin strip can be mounted on a PCB with M2x10 and M2 nuts, self-tapping screws or rivets without any additional soldering. The plug direction for mating pin strips is parallel to the PCB.

For each pole, the pin strip has one trapezoidal coding slot in which the coding elements 120-K can be inserted.

Part Numbers

No. of poles	120-M-217	Length	PU
2	15.806.227	20,00	100
3	15.806.228	25,00	100
4	15.806.229	30,00	100
5	15.806.230	35,00	50
6	15.806.231	40,00	50
7	15.806.232	45,00	50
8	15.806.233	50,00	50
9	15.806.234	55,00	50
10	15.806.235	60,00	50
11	15.806.236	65,00	50
12	15.806.237	70,00	50

further number of poles on request

General Information

Pitch	5 mm
No. of poles	2 - 12
Usable with	all plug connectors of series 120




Technical Data

Overvoltage Category	III	III	II
Pollution Severity Level	3	2	2
Rated Voltage	250 V	320 V	630 V
Rated Impulse Voltage	4 kV	4 kV	4 kV
Rated Insulation Voltage	250 V acc. to EN 60998-1		
Rated Current	12 A		
Hole in PCB	ø 1,4 mm		

Material

Moulding	PA, grey, V-0
Comparative Tracking Index	CTI ≥ 600
Insulating Group	I
Temperature Range	-40°C up to 100°C
Solder pin	1,0 x 1,0 mm; tin plated brass

Approvals

	Current [A]	Voltage [V]	Group	AWG	[Nm]
	15	300	B		
	10	300	D		
	15	300	B		
	10	300	D, E		
					

Options / Accessories

- Consecutive numbering
- Special marking according to drawing
- Self-adhesive marking strip BST-5,00
- Pitch of 10 mm for larger clearance and creepage distances
- Other solder pin lengths on request
- Coding elements 120-K
- Connectors equipped with coding elements on request
- M2x10 screw and M2 nut