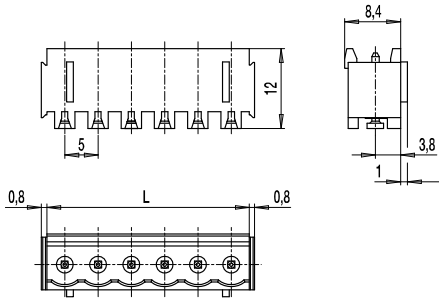
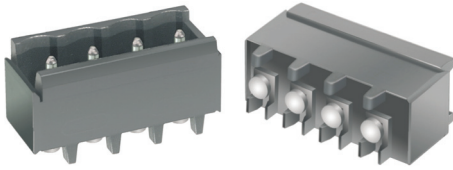
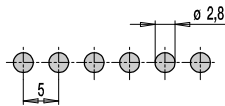


Plug Connector System Series 120 for SMD 120-M-221-SMD



PCB Layout



Solder paste thickness: 0,15 - 0,2 mm
Solder pad diameter: \varnothing 2,8

The PCB terminals for surface mounting comprise several types for reflow-soldering processes.

Housings out of temperature resistant plastic material and solder pins in round shape with soldering foot form the pin strips of the series of 120-M-221-SMD.

The pins are movable in vertical direction and this ensures plane positioning of the soldering feet on the soldering pads. Thus, 100% coplanarity is guaranteed.

For the automatic assembling process, all pin strip versions are packed Tape on Reel and are equipped with high temperature resistant pick caps, which can comfortably be removed after the soldering process.

Articlenumbers

No. of poles	120-M-221-SMD	Length	Pcs
2	40.806.352	10,00	200
3	40.806.353	15,00	200
4	40.806.354	20,00	100
5	40.806.355	25,00	100
6	40.806.356	30,00	100
8	40.806.358	40,00	50
10	40.806.360	50,00	50
12	40.806.362	60,00	50

further number of poles on request

General Information

Centre to centre spacing	5 mm
No. of poles	2 - 12
Usable with	all plugs series 120
Accessories	Self-adhesive marking strip BST-5,0

Technical Data

Overvoltage Category	III	III	II
Pollution Severity Level	3	2	2
Rated Voltage	160 V	160 V	250 V
Rated Impulse Voltage	2,5 kV	2,5 kV	2,5 kV
Rated Insulation Voltage	130 V acc. to EN 60998-1		
Rated Current	12 A		
Soldering process	Reflow solder		

Material

Moulding	PA HT, black, V-0
Comparative Tracking Index	CTI 250
Insulating Group	IIIa
Temperature Range	-40°C up to 105°C; reflow solder temperature (Peak) max. 250°C (15-30 s)
Solder pin	\varnothing 1,1 mm; tin plated brass

Approvals

	Current	Voltage	Group	AWG	Nm
	15	300	B		
	10	300	D		
	15	300	B		
	10	300	D,E		

Options / Accessories

- Consecutive numbering

Articlenumbers: Tape-on-Reel

No. of poles	120-M-221-SMD	Tape Width	Tape Height	Pcs
2	40.806.352.A00	32 mm	17,4 mm	225
3	40.806.353.A00	32 mm	17,4 mm	225
4	40.806.354.A00	56 mm	17,4 mm	225
5	40.806.355.A00	56 mm	17,4 mm	225
6	40.806.356.A00	56 mm	17,4 mm	225
7	40.806.357.A00	56 mm	17,4 mm	225

further number of poles on request