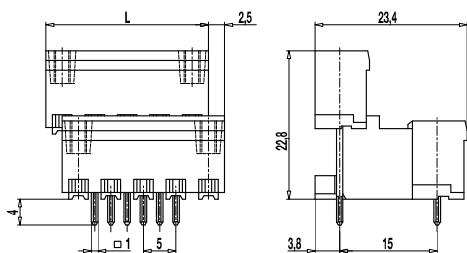
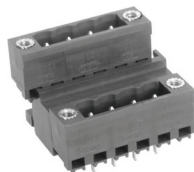


## Pin strip 120-M-265

Plug-in direction vertical to PCB, two-tier version, with connecting flanges



The pin strip 120-M-265, two-tier version with connecting flanges and a pitch of 5 mm, is available in 4- to 24-pole design and can be mounted side-by-side.

Thread insert in the connecting flanges allow to screw the pin strip together with the plug connectors 120-A-115, 120-D-115 and 120-D-125. The plug direction for mating pin strips is vertical to the PCB.

For each pole, the pin strip has one trapezoidal coding slot in which the coding elements 120-K can be inserted.

### Part Numbers

No. of poles	120-M-265	Length	PU
4	30.806.652	20,00	100
6	30.806.653	25,00	100
8	30.806.654	30,00	50
10	30.806.655	35,00	50
12	30.806.656	40,00	50
14	30.806.657	45,00	50
16	30.806.658	50,00	25
18	30.806.659	55,00	25
20	30.806.660	60,00	25
22	30.806.661	65,00	25
24	30.806.662	70,00	25

further number of poles on request

### General Information

Pitch	5 mm
No. of poles	4 - 24
Usable with	all plug connectors of series 120

### Technical Data

Overvoltage Category	III	III	II
Pollution Severity Level	3	2	2
Rated Voltage	250 V	320 V	630 V
Rated Impulse Voltage	4 kV	4 kV	4 kV
Rated Insulation Voltage	250 V acc. to EN 60998-1		
Rated Current	12 A		
Hole in PCB	ø 1,4 mm		

### Material

Moulding	PA, grey, V-0
Comparative Tracking Index	CTI ≥ 600
Insulating Group	I
Temperature Range	-40°C up to 100°C
Solder pin	1,0 x 1,0 mm; tin plated brass

### Approvals

	Current	Voltage	Group	AWG	Nm
	15	300	B		
	10	300	D		
	15	300	B		
	10	300	D, E		

### Options / Accessories

- Consecutive numbering
- Special marking according to drawing
- Self-adhesive marking strip BST-5,00
- Pitch of 10 mm for larger clearance and creepage distances
- Coding elements 120-K
- Connectors equipped with coding elements on request
- Two-tier version with front PCB connector offset to the left
- Special combinations of the front and rear row of the two-tier version.