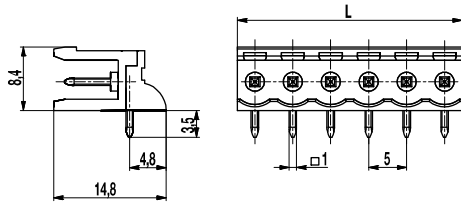


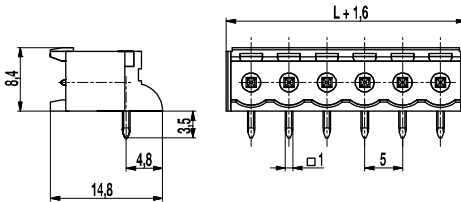
Pin strip

120-M-311/-411

Plug-in direction parallel to PCB, with support



120-M-311



120-M-411

The pin strips 120-M-311 and 120-M-411, with support and a pitch of 5 mm, is available in 2- to 12-pole design.

The ..-M-311 version is a pin strip without side walls. It can be mounted side-by-side without pole loss. The ..-M-411 version is a pin strip with closed side walls. Both versions have a rear support. For both versions, the plug direction for mating plug connectors is parallel to the PCB.

For each pole, the pin strips have one trapezoidal coding slot in which the coding elements 120-K can be inserted.

Part Numbers

No. of poles	120-M-311	120-M-411	Length	PU
2	10.806.402	10.806.426	10,00	200
3	10.806.403	10.806.427	15,00	200
4	10.806.404	10.806.428	20,00	100
5	10.806.405	10.806.429	25,00	100
6	10.806.406	10.806.430	30,00	100
7	10.806.407	10.806.431	35,00	50
8	10.806.408	10.806.432	40,00	50
9	10.806.409	10.806.433	45,00	50
10	10.806.410	10.806.434	50,00	50
11	10.806.411	10.806.435	55,00	50
12	10.806.412	10.806.436	60,00	50

further number of poles on request

General Information

Pitch	5 mm
No. of poles	2 - 12
Usable with	all plug connectors of series 120
Additional Information	Ordering information ..-M-311: with support and without side walls ..-M-411: with support and with side walls

Technical Data

Overvoltage Category	III	III	II
Pollution Severity Level	3	2	2
Rated Voltage	250 V	320 V	630 V
Rated Impulse Voltage	4 kV	4 kV	4 kV
Rated Insulation Voltage	250 V acc. to EN 60998-1		
Rated Current	12 A		
Hole in PCB	ø 1,4 mm		

Material

Moulding	PA, grey, V-0
Comparative Tracking Index	CTI ≥ 600
Insulating Group	I
Temperature Range	-40°C up to 100°C
Solder pin	1,0 x 1,0 mm; tin plated brass

Approvals

	Current	Voltage	Group	AWG	Nm
	15	300	B		
	10	300	D		
	15	300	B		
	10	300	D, E		

Options / Accessories

- Consecutive numbering
- Special marking according to drawing
- Self-adhesive marking strip BST-5,00
- Pitch of 10 mm for larger clearance and creepage distances
- Other solder pin lengths on request
- Coding elements 120-K
- Connectors equipped with coding elements on request
- Pin strips with fastening flanges, see 120-M-217
- Pin strips with connecting flanges, see 120-M-215