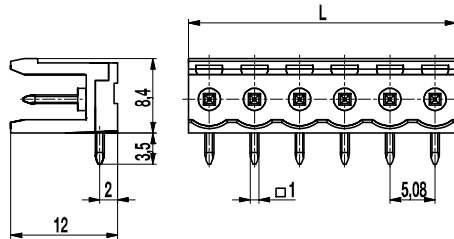
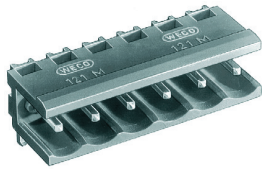


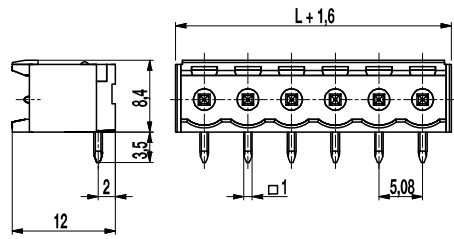
# Pin strip

## 121-M-111/-211

Plug-in direction parallel to PCB



121-M-111



121-M-211

The pin strips 121-M-111 und 121-M-211 with a pitch of 5,08 mm are available in 2- to 12-pole design.

The ..-M-111 version is a pin strip without side walls and can be mounted side-by-side without pole loss. The ..-M-211 version is a pin strip with closed side walls. For both versions, the plug direction for mating plug connectors is parallel to the PCB.

For each pole, the pin strips have one trapezoidal coding slot in which the coding elements 120-K can be inserted.

### Part Numbers

No. of poles	121-M-111	121-M-211	Length	PU
2	10.806.102	10.806.126	10,16	200
3	10.806.103	10.806.127	15,24	200
4	10.806.104	10.806.128	20,32	100
5	10.806.105	10.806.129	25,40	100
6	10.806.106	10.806.130	30,48	100
7	10.806.107	10.806.131	35,56	50
8	10.806.108	10.806.132	40,64	50
9	10.806.109	10.806.133	45,72	50
10	10.806.110	10.806.134	50,80	50
11	10.806.111	10.806.135	55,88	50
12	10.806.112	10.806.136	60,96	50

further number of poles on request

### General Information

Pitch	5,08 mm
No. of poles	2 - 12
Usable with	all plug connectors of series 121
Additional Information	Ordering information: ..-M-111: without side walls ..-M-211: with side walls

### Technical Data

Overvoltage Category	III	III	II
Pollution Severity Level	3	2	2
Rated Voltage	250 V	320 V	630 V
Rated Impulse Voltage	4 kV	4 kV	4 kV
Rated Insulation Voltage	250 V acc. to EN 60998-1		
Rated Current	12 A		
Hole in PCB	ø 1,4 mm		

### Material

Moulding	PA, grey, V-0
Comparative Tracking Index	CTI ≥ 600
Insulating Group	I
Temperature Range	-40°C up to 100°C
Solder pin	1,0 x 1,0 mm; tin plated brass

### Approvals

	Current	Voltage	Group	AWG	Nm
	15	300	B		
	10	300	D		
	15	300	B		
	10	300	D, E		

### Options / Accessories

- Consecutive numbering
- Special marking according to drawing
- Self-adhesive marking strip BST-5,08
- Pitch of 10,16 mm for larger clearance and creepage distances
- Other solder pin lengths on request
- Coding elements 120-K
- Connectors equipped with coding elements on request