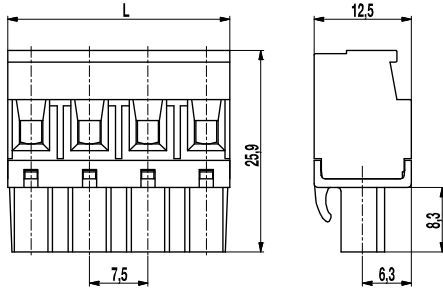


# Plug connector

## 122-D-111

Screw connection, backside latching hooks



The plug connector 122-D-111 with a pitch of 7,5 mm, is available in 2- to 12-pole design. The large pitch allows connecting higher rated voltages under tough industrial conditions.

Interlocking plug connector with the pin strip results in optimum vibration resistance.

On version 122-D-111, the wire entrance is located opposite to the latching hook side; on version 122-D-121, it is located on the same side. Plugging the plug connector on pin strips of series 122 therefore results in inverted plug-in configurations.

For each pole the plug connector has one trapezoidal coding slot in which the coding elements 120-K can be inserted. The wire entrance is vertical to the plug direction. The screws are captive.

### Part Numbers

No. of poles	122-D-111	Length	Pcs
2	10.809.402	13,00	200
3	10.809.403	20,50	100
4	10.809.404	28,00	100
5	10.809.405	35,50	50
6	10.809.406	43,00	50
7	10.809.407	50,50	50
8	10.809.408	58,00	50
9	10.809.409	65,50	50
10	10.809.410	73,00	50
11	10.809.411	80,50	50
12	10.809.412	88,00	50

further number of poles on request

### General Information

Pitch	7,5 mm
No. of poles	2 - 12
Usable with	all pin strips of series 122

### Technical Data

Clamping Range	<i>solid / flexible / AWG</i> 0,2 - 6 mm <sup>2</sup> / 0,2 - 4 mm <sup>2</sup> / 26 - 12 AWG		
Rated Cross Section	2,5 mm <sup>2</sup>		
Wire Stripping Length	7 mm ± 0,5 mm		
Overvoltage Category	III	III	II
Pollution Severity Level	3	2	2
Rated Voltage	500 V	630 V	1000 V
Rated Impulse Voltage	6 kV	6 kV	6 kV
Rated Insulation Voltage	450 V acc. to EN 60998-1		
Rated Current	12 A		
Torque	0,5 Nm		

### Material

Moulding	PA, grey, V-0
Comparative Tracking Index	CTI ≥ 600
Insulating Group	I
Temperature Range	-40°C up to 100°C
Terminal body	Nickel plated brass
Pressure clamp	Tin plated tin bronze
Screw	M3; zinc plated steel, blue passivated
Spring	Tin plated tin bronze

### Approvals

	Current	Voltage	Group	AWG	Nm
	15	300	B	26 - 12	0,51
	10	300	D	26 - 12	0,51
	15	300	B	26 - 12	0,51
	10	300	D, E	26 - 12	0,51

### Options / Accessories

- Consecutive numbering
- Special marking according to drawing
- Self-adhesive marking strip BST-7,50
- Coding elements 120-K
- Connectors equipped with coding elements on request