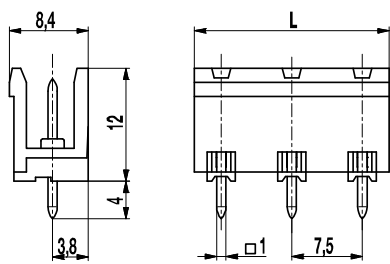


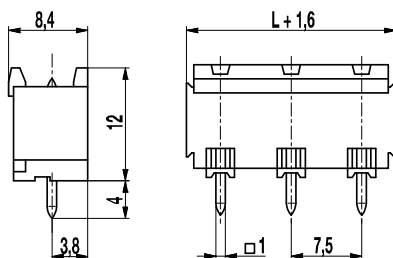
Pin strip

122-M-121/-221

Plug-in direction vertical to PCB



122-M-121 (without side wall)



122-M-221 (with side wall)

The pin strips 122-M-121 and 122-M-221 with a pitch of 7,5 mm are available in 2- to 12-pole design.

The ..-M-121 version is a pin strip without side wall. The ..-M-221 version is a pin strip with side wall. For both designs, the plug direction for mating plug connectors is vertical to the PCB.

For each pole, the pin strip has one trapezoidal coding slot in which the coding elements 120-K can be inserted.

Part Numbers

No. of poles	122-M-121	122-M-221	Length	Pcs
2	20.807.002	20.807.017	13,00	200
3	20.807.003	20.807.018	20,50	100
4	20.807.004	20.807.019	28,00	100
5	20.807.005	20.807.020	35,50	50
6	20.807.006	20.807.021	43,00	50
7	20.807.007	20.807.022	50,50	50
8	20.807.008	20.807.023	58,00	50
9	20.807.009	20.807.024	65,50	50
10	20.807.010	20.807.025	73,00	50
11	20.807.011	20.807.026	80,50	50
12	20.807.012	20.807.027	88,00	50

General Information

Pitch	7,5 mm
No. of poles	2 - 12
Usable with	all plug connectors of series 122
Additional Information	Ordering information: ..-121: without side wall ..-221: with side wall

Technical Data

Overvoltage Category	III	III	II
Pollution Severity Level	3	2	2
Rated Voltage	500 V	630 V	1000 V
Rated Impulse Voltage	6 kV	6 kV	6 kV
Rated Insulation Voltage	750 V acc. to EN 60998-1		
Rated Current	12 A		
Hole in PCB	ø 1,4 mm		

Material

Moulding	PA, grey, V-0
Comparative Tracking Index	CTI ≥ 600
Insulating Group	I
Temperature Range	-40°C up to 100°C
Solder pin	1,0 x 1,0 mm; tin plated brass

Approvals

	Current	Voltage	Group	AWG	Nm
	15	300	B		
	10	300	D		
	15	300	B		
	10	300	D, E		

Options / Accessories

- Consecutive numbering
- Special marking according to drawing
- Self-adhesive marking strip BST-7,50
- Coding elements 120-K
- Longer P.C. pins on request
- Connectors equipped with coding elements on request