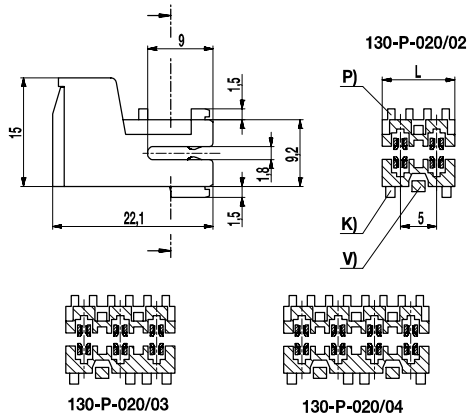
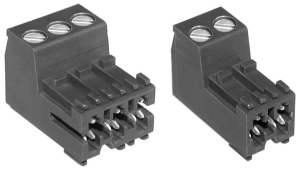


# Plug connector

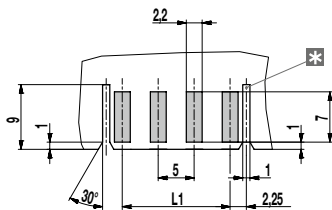
## 130-P

Screw connection, direct contacting with the PCB



P) Positioning  
K) Coding  
V) Interlocking

### Recommended PCB Layout



L1 = (No. of poles - 1) x pitch  
\* = only necessary with closed sidewalls

The plug connector 130-P series was designed particularly for direct contacting with the PCB.

Accurate positioning can be achieved by versions with single- or double-sided closed walls or by additional coding keys between the poles serving as centre polarizing. For this purpose, the PCB must be equipped with slots in the corresponding positions.

Coding by means of the RAST 5 plug-connection system is possible using a coding frame, which is not included in our delivery extent (see also 130-A).

The technical drawing shows an example of a 2-, 3- and 4-pole version, uncoded with the corresponding article designations. The corresponding article numbers are listed below.

Other coded versions (P,K,V) are available upon request.

### Part Numbers

No. of poles	130-P	Length	PU
2	20.802.220	10,00	100
3	20.802.230	15,00	100
4	20.802.240	20,00	100

further number of poles on request

### General Information

Pitch	5 mm
No. of poles	2 - 12
Usable with	PC Boards

### Technical Data

Clamping Range	<i>solid / flexible / AWG</i>		
	0,2 - 4 mm <sup>2</sup> / 0,2 - 2,5 mm <sup>2</sup> / 26 - 14 AWG		
Rated Cross Section	2,5 mm <sup>2</sup>		
Wire Stripping Length	7 mm ± 0,5 mm		
Overvoltage Category	III	III	II
Pollution Severity Level	3	2	2
Rated Voltage	160 V	160 V	320 V
Rated Impulse Voltage	2,5 kV	2,5 kV	2,5 kV
Rated Insulation Voltage	130 V acc. to EN 60998-1		
Rated Current	6 A		
PCB thickness	1,6 mm		
Torque	0,5 Nm		

### Material

Moulding	PA, grey, V-0
Comparative Tracking Index	CTI ≥ 600
Insulating Group	I
Temperature Range	-40°C up to 100°C
Terminal body	Nickel plated brass
Pressure clamp	Tin plated tin bronze
Screw	M3; zinc plated steel, blue passivated
Spring	Tin plated tin bronze

### Approvals

	Current	Voltage	Group	AWG	Nm
	16	300	B	26 - 12	0,51
	10	300	D	26 - 12	0,51
	15	300	B, D, E	26 - 14	0,51

### Options / Accessories

- Consecutive numbering
- Special marking according to drawing
- Self-adhesive marking strip BST-5,00
- Pitch of 10 mm for larger clearance and creepage distances
- Closed side wall, on one or both sides
- Coding elements 130-CP
- Version with extended wire entrance