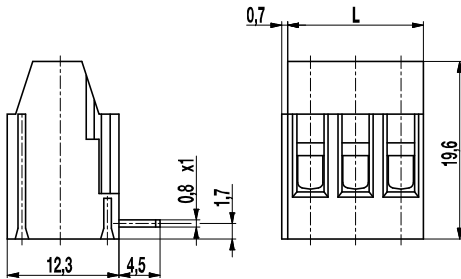
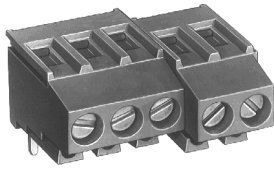


## PCB connector

### 150-A-121

Screw connection, wire entrance vertical to PCB, interlocking, with test holes



The PCB connector 150-A-121 is the horizontal version of 150-A-111 with a pitch of 5 mm and is available with 2 or 3 poles.

Due to the ample terminal space and the lift system, this PCB connector is particularly user-friendly. Optimum wire protection is guaranteed even after several disconnections of one or multiple wires.

Lateral latching elements on the housing allow to connect the PCB connector to longer terminal strips without pole loss. The wire entrance is vertical to the PCB. The screws are captive.

This PCB connector has test holes for  $\varnothing$  2.3 mm test plugs.

#### Part Numbers

No. of poles	150-A-121	Length	PU
2	20.801.002	10,00	200
3	20.801.003	15,00	200

#### General Information

Pitch	5 mm
No. of poles	2 + 3

#### Technical Data

Clamping Range	<i>solid / flexible / AWG</i>		
	0,14 - 4 mm <sup>2</sup> / 0,14 - 2,5 mm <sup>2</sup> / 26 - 14 AWG		
Rated Cross Section	2,5 mm <sup>2</sup>		
Wire Stripping Length	7,5 mm $\pm$ 0,5 mm		
Overvoltage Category	III	III	II
Pollution Severity Level	3	2	2
Rated Voltage	250 V	320 V	630 V
Rated Impulse Voltage	4 kV	4 kV	4 kV
Rated Insulation Voltage	250 V acc. to EN 60998-1		
Rated Current	24 A		
Hole in PCB	$\varnothing$ 1,3 mm		
Torque	0,5 Nm		

#### Material

Moulding	PA, grey, V-0
Comparative Tracking Index	CTI = 600
Insulating Group	I
Temperature Range	-40°C up to 100°C
Terminal body	Nickel plated brass
Pressure clamp	Copper alloy, tin plated
Screw	M3; zinc plated steel, blue passivated
Solder pin	1,0 x 0,8 mm; copper alloy, tin plated

#### Approvals

	Current	Voltage	Group	AWG	Nm
	20 [1]	300	B	22-10 [2]	0,51
	10	300	D	22-10 [2]	0,51
	20	300	B	26 - 10	0,51
	10	300	D, E	26 - 10	0,51

[1] 20 A max for factory-wiring only

[2] Wire sizes No. 26 - 24 AWG for factory-wiring only

#### Options / Accessories

- Consecutive numbering
- Special marking according to drawing
- Self-adhesive marking strip BST-5,00
- Pitch of 10 mm for larger clearance and creepage distances
- Connected to larger number of poles