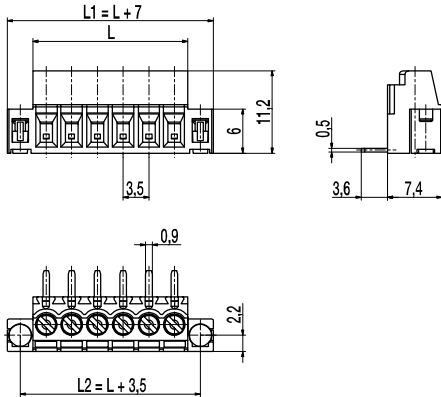
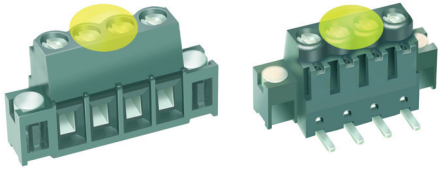


PCB connector for SMD

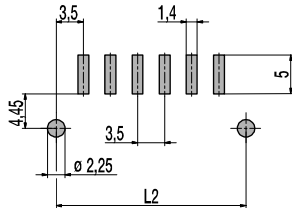
210-A-126-SMD

Screw connection, with solder flanges



L = No. of poles x pitch

PCB Layout



Solder paste thickness: 0,2 mm

The 2 to 12 pole connectors with a pitch of 3,5 mm have a screw connection with elevator clamping system and are equipped with M2 captive screws. Just as the 210-A-SMD, the 210-A-126-SMD represents a space saving and compact connector with a high connecting capacity. The generous clamping range is of 1,7 mm x 2,6 mm.

A distinguishing characteristic to the 210-A-SMD, however, is the clearly increased adhesion force on the PCB. Soldering cylinders on either side of the housing (floating anchors) are movable in vertical direction and thereby they obtain 100% coplanarity between solder pins and soldering cylinders.

They are transferred more to the front in comparison to the connector centre in order to keep the retaining strength, where the wires are connected. Thus, the force, acting on the solder pins, is reduced in a very important way.

Packed in magazines or equipped with Pick Discs in Tape-on-Reel, this genuine SMD terminal is suitable for the automatic assembly.

Part Numbers

No. of poles	210-A-126-SMD	Length	Pcs
2	10.804.232	14,00	888
3	10.804.233	17,50	696
4	10.804.234	21,00	576
6	10.804.236	28,00	432
10	10.804.240	42,00	234
12	10.804.242	49,00	198

further number of poles on request

General Information

Pitch	3,5 mm
No. of poles	2 - 12

Technical Data

Clamping Range	<i>solid / flexible / AWG</i>		
	0,14 - 1,5 mm ² / 0,14 - 1,5 mm ² / 30 - 16 AWG		
Rated Cross Section	1 mm ²		
Wire Stripping Length	5,5 mm ± 0,5 mm		
Overvoltage Category	III	III	II
Pollution Severity Level	3	2	2
Rated Voltage	160 V	160 V	320 V
Rated Impulse Voltage	2,5 kV	2,5 kV	2,5 kV
Rated Insulation Voltage	130 V acc. to EN 60998-1		
Rated Current	13,5 A		
Soldering process	Reflow solder		
Torque	0,2 Nm		

Material

Moulding	PA HT, black, V-0
Comparative Tracking Index	CTI ≥ 600
Insulating Group	I
Temperature Range	-40°C up to 150°C; reflow solder temperature (Peak) max. 260°C (15-30 s)
Terminal body	Nickel plated brass
Pressure clamp	Copper alloy, tin plated
Screw	M2; copper alloy, tin plated
Solder pin	Copper alloy, tin plated
Solder cylinder	Tin plated brass

Approvals

	Current	Voltage	Group	AWG	Nm
	10	300	B	30 - 16	0,23
	10	300	B	30 - 16	0,22

Options / Accessories

- Special marking according to drawing
- Self-adhesive marking strip BST-3,50 [1]

Part Numbers: Tape-on-Reel

No. of poles	210-A-126-SMD	Tape Width	Tape Height	Pcs
2	10.804.232.A00	32 mm	12,0 mm	375
3	10.804.233.A00	44 mm	14,6 mm	325
4	10.804.234.A00	44 mm	14,6 mm	325
5	10.804.235.A00	44 mm	14,6 mm	325
6	10.804.236.A00	44 mm	14,6 mm	325
8	10.804.238.A00	56 mm	14,6 mm	325

further number of poles on request

[1] To be fitted after reflow soldering process