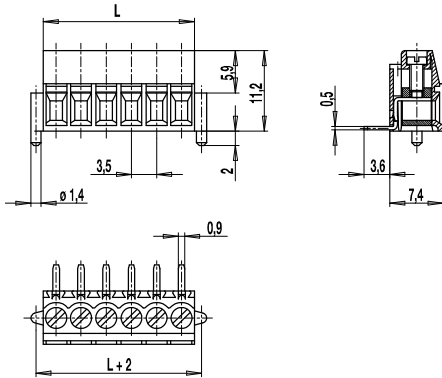


PCB connector for SMD

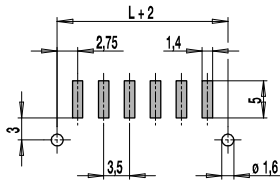
210-A-SMD

Screw connection, with anti-twist peg



L = No. of poles x pitch

PCB Layout



Solder paste thickness: 0,2 mm

The PCB connectors for surface mounting comprise several types for reflow processes. The SMD connector 210-A-SMD with a pitch of 3,5 mm is designed with screw connections in elevator clamping style. The terminal clamp and the soldering tag are manufactured as a single unit and permanently engaged in the housing. The solder pins are exactly aligned parallel to the printed circuit board in order to create a coplanar connection after the reflow soldering process. The moulding is made of heat resistant thermoplastic material and equipped with plastic pegs on both sides to prevent twisting. The use of a strain relief is recommended. This article is only available in tubes or in Tape-on-Reel.

Part Numbers

No. of poles	210-A-SMD	Length	Pcs
2	10.804.202	7,00	900
3	10.804.203	10,50	684
4	10.804.204	14,00	540
5	10.804.205	17,50	450
6	10.804.206	21,00	378
8	10.804.208	28,00	288
10	10.804.210	35,00	234
12	10.804.212	42,00	198

further number of poles on request

General Information

Pitch	3,5 mm
No. of poles	2 - 12

Technical Data

Clamping Range	<i>solid / flexible / AWG</i>		
	0,14 - 1,5 mm ² / 0,14 - 1,5 mm ² / 30 - 16 AWG		
Rated Cross Section	1 mm ²		
Wire Stripping Length	5,5 mm ± 0,5 mm		
Overvoltage Category	III	III	II
Pollution Severity Level	3	2	2
Rated Voltage	160 V	160 V	320 V
Rated Impulse Voltage	2,5 kV	2,5 kV	2,5 kV
Rated Insulation Voltage	130 V acc. to EN 60998-1		
Rated Current	13,5 A		
Soldering process	Reflow solder		
Torque	0,2 Nm		

Material

Moulding	PA HT, black, V-0
Comparative Tracking Index	CTI ≥ 600
Insulating Group	I
Temperature Range	-40°C up to 150°C; reflow solder temperature (Peak) max. 260°C (15-30 s)
Terminal body	Nickel plated brass
Pressure clamp	Copper alloy, tin plated
Screw	M2, Copper alloy, tin plated
Solder pin	Copper alloy, tin plated

Approvals

	Current	Voltage	Group	AWG	Nm
	10	300	B	30 - 16	0,23
	10	300	B	30 - 16	0,22

Options / Accessories

- Consecutive numbering
- Special marking according to drawing
- Self-adhesive marking strip BST-3,50 [1]

Part Numbers: Tape-on-Reel

No. of poles	210-A-SMD	Tape Width	Tape Height	Pcs
2	10.804.202.A00	44 mm	14,6 mm	325
3	10.804.203.A00	44 mm	14,6 mm	325
4	10.804.204.A00	44 mm	14,6 mm	325
5	10.804.205.A00	44 mm	14,6 mm	325
6	10.804.206.A00	44 mm	14,6 mm	325
7	10.804.207.A00	44 mm	14,6 mm	325

further number of poles on request

[1] To be fitted after reflow soldering process