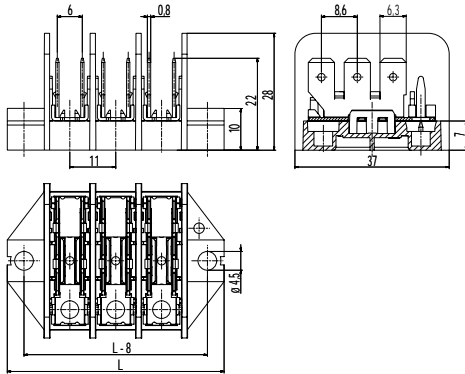
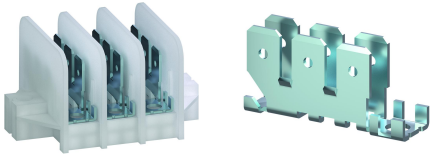


308-PA/..-202

Distribution block

Tab connections 6 x 6,3; vertical



Part Numbers

No. of poles	308-PA/..-202	Length	PU
1	11.885.202	30	250
2	12.885.202	41	200
3	13.885.202	52	200
4	14.885.202	63	100
5	15.885.202	74	100
6	16.885.202	85	100
7	17.885.202	96	100
8	18.885.202	107	50
10	20.885.202	129	50
12	22.885.202	151	50

further number of poles on request

General Information

Pitch	11 mm
No. of poles	1 - 16


Technical Data

Rated Insulation Voltage	450 V acc. to EN 60998-1
Rated Current	acc. to DIN EN 61210: 12 A with receptable 6,3; wire 1,5 mm ² 15 A with receptable 6,3; wire 2,5 mm ² 18 A with receptable 6,3; wire 4 mm ² 20 A with receptable 6,3; wire 6 mm ²

Material

Moulding	PA, natural, V-2
Comparative Tracking Index	CTI 250
Insulating Group	IIIa
Temperature Range	RTI Str 90°C
Tab	Zinc plated steel

Approvals

	Current [A]	Voltage [V]	Group	AWG	[Nm]
cUL [®] us	20	300	B		
	10	300	D		
	Current [A]	Voltage [V]	[mm ²]		
	17,5	450	1,5		

Options / Accessories

- Consecutive numbering
- Special marking according to drawing
- Fixed marking in the tool on request