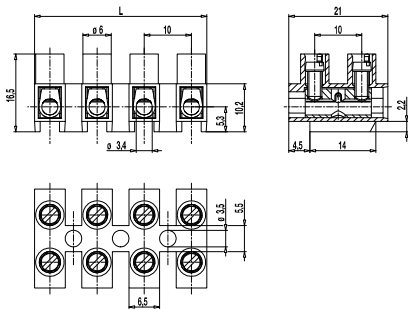
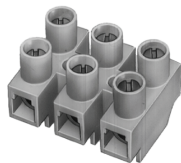


## Socket terminal strip

### 323-FU-16,5(-HDS)

Screw connection, with 16,5 mm raised base



The raised bases of the 323-FU-16,5 type extend the creepage distance to the ground.

#### Part Numbers

No. of poles	323-FU-16,5	323-FU-16,5-HDS	Length	Pcs
1	11.822.048	31.822.048	8,00	5000
2	12.822.048	32.822.048	18,00	1000
3	13.822.048	33.822.048	28,00	1000
4	14.822.048	34.822.048	38,00	500
5	15.822.048	35.822.048	48,00	500
6	16.822.048	36.822.048	58,00	100
7	17.822.048	37.822.048	68,00	70
8	18.822.048	38.822.048	78,00	70
9	19.822.048	39.822.048	88,00	60
10	20.822.048	40.822.048	98,00	50
11	21.822.048	41.822.048	108,00	50
12	22.822.048	42.822.048	117,00	50

#### General Information

Pitch	10 mm
No. of poles	1 - 12
Areas of application	For household, lighting and similar electrical appliances

#### Technical Data

Clamping Range	<i>solid / flexible / AWG</i>		
<i>without wire protector</i>	1 - 6 mm <sup>2</sup> / 1 - 4 mm <sup>2</sup> / 18 - 10 AWG		
<i>with wire protector</i>	1 - 4 mm <sup>2</sup> / 1 - 2,5 mm <sup>2</sup> / 20 - 12 AWG		
Rated Cross Section	2,5 mm <sup>2</sup>		
Wire Stripping Length	6,5mm ± 0,5		
Overvoltage Category	III	III	II
Pollution Severity Level	3	2	2
Rated Voltage	630 V	630 V	1000 V
Rated Impulse Voltage	6 kV	6 kV	6 kV
Rated Insulation Voltage	750 V acc. to EN 60998-1		
Rated Current	24 A		
Torque	0,5 Nm		

#### Material

Moulding	PA, natural, V-2
Comparative Tracking Index	CTI ≥ 600
Insulating Group	I
Temperature Range	-40°C up to 80°C
Terminal Body	Tin plated brass
Screw	M3; zinc plated steel, blue passivated
Wire protector	Stainless steel strip

#### Approvals

	Current	Voltage	Group	AWG	Nm
	30	300	B	22 - 10	0,51
	30	150	C	22 - 10	0,51
	10	300	D	22 - 10	0,51
	25	300	B	26 - 10	0,51
	25	150	C	26 - 10	0,51
	10	300	D,E	26 - 10	0,51
	Current	Voltage	mm <sup>2</sup>		
	24	750	2,5		

#### Options / Accessories

- Special marking accord. drawing
- Marking strips BST-323
- Jumper 323-J
- Cross-head screws
- Screws made of brass
- Moulding made of special polyamide for e.g. household appliances
- Cover cap A-323 and base plate B-323 for additional safety
- Version with integrated wire stop: 323-V-FU-16,5(-HDS)