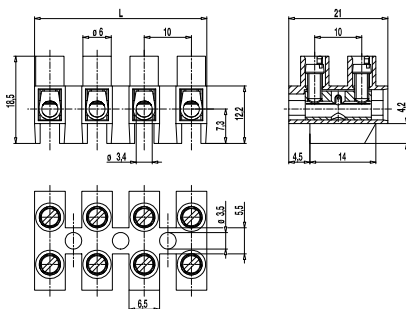
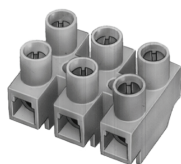


Socket Terminal Strips of series 300

323-FU-18,5(-HDS)

Screw connection



The raised bases of the 323-FU-18,5 Types extend the creepage distance to the ground and are suitable for higher voltages without an additional insulating base.

Part Numbers

No. of poles	323-FU-18,5	323-FU-18,5-HDS	Length	Pcs
1	11.822.049	31.822.049	8,00	3000
2	12.822.049	32.822.049	18,00	1000
3	13.822.049	33.822.049	28,00	1000
4	14.822.049	34.822.049	38,00	500
5	15.822.049	35.822.049	48,00	500
6	16.822.049	36.822.049	58,00	80
7	17.822.049	37.822.049	68,00	65
8	18.822.049	38.822.049	78,00	50
9	19.822.049	39.822.049	88,00	50
10	20.822.049	40.822.049	98,00	40
11	21.822.049	41.822.049	108,00	40
12	22.822.049	42.822.049	117,00	40

Part Numbers: "no flame" acc. to glow-wire test

No. of poles	323-FU-18,5	323-FU-18,5-HDS	Length	Pcs
3		33.822.021.EN6	28,00	1000
12		42.822.021.EN6	117,00	40

further number of poles on request

General Information

Centre to centre spacing	10 mm
No. of poles	1 - 12
Accessories	Marking Strips BST-323, Jumper 323-J, Cover A-323 and Base plate B-323
Areas of application	For household, lighting and similar electrical appliances.
Additional Information	Version with raised base. Available with integrated wire stop on request.

Technical Data

Clamping Range	<i>solid / flexible / AWG</i>
<i>without wire protector</i>	1 - 6 mm ² / 1 - 4 mm ² / 18 - 12 AWG
<i>with wire protector</i>	1 - 4 mm ² / 1 - 2,5 mm ² / 18 - 14 AWG
Rated Cross Section	2,5 mm ²
Wire Stripping Length	6,5 mm
Overvoltage Category	III
Pollution Severity Level	3
Rated Voltage	630 V
Rated Impulse Voltage	8 kV
Rated Insulation Voltage	750 V acc. to EN 60998-1
Rated Current	26 A
Torque	0,5 Nm

Material

Moulding	PA, natural, V-2 (PA, natural, V-0) details in braquets for "no flame" products
Comparative Tracking Index	CTI ≥ 600
Insulating Group	I
Temperature Range	-40°C up to 80°C
Terminal Body	Tin plated brass
Screw	M3, zinc plated steel, blue passivated
Wire protector	Stainless steel strip

Approvals

	Current	Voltage	Group	AWG	Nm
	30	300	B,D	22 - 10	0,51
	25	300	B,C,D,E	26 - 10	0,51
	5	600	D,E	26 - 10	0,51
	Current	Voltage	mm ²		
	24	750	2,5		

Options / Accessories

- Special marking accord. drawing
- Cover A-323 and Base Plate B-323 for additional safety
- Screw made of brass
- cross-head screw
- Moulding made of special Polyamide e.g. household appliances