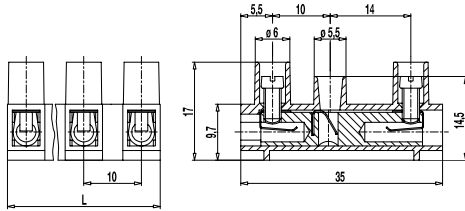


## 323-PHFBW(-DS)

Plug-in terminal strip

2 screw connections & socket with clamping spring, plug-in direction vertical



The plug-in terminal strip 323-PHFBW is available in 10 mm pitch with 2 to 12 poles. It has two screw connections per pole and one plug connection pointing upwards for the connection of a terminal strip with pins.

When using a 322-SVW plug-in terminal strip, the through-wiring of the angular plug connection is achieved by means of screw connections. The individual consumer is wired at the plug connection.

The wire protector of the "DS"-version reliably prevents damage to multi-wire flexible conductors by the turning screw. These terminals strips can be screw-mounted on a substrate.

### Part Numbers

No. of poles	323-PHFBW	323-PHFBW-DS	Length	PU
2	12.822.031	32.822.031	18,00	500
3	13.822.031	33.822.031	28,00	500
4	14.822.031	34.822.031	38,00	500
5	15.822.031	35.822.031	48,00	100
6	16.822.031	36.822.031	58,00	100
7	17.822.031	37.822.031	68,00	70
8	18.822.031	38.822.031	78,00	70
9	19.822.031	39.822.031	88,00	60
10	20.822.031	40.822.031	98,00	50
11	21.822.031	41.822.031	108,00	50
12	22.822.031	42.822.031	117,00	25

### General Information

Pitch	10 mm
No. of poles	2 - 12
Usable with	322-SVW(-DS)
Areas of application	Applications that require to easily open and close not energised circuits.



### Technical Data

Clamping Range	<i>solid / flexible / AWG</i>		
<i>without wire protector</i>	0,75 - 6 mm <sup>2</sup> / 0,75 - 4 mm <sup>2</sup> / 18 - 10 AWG		
<i>with wire protector</i>	0,5 - 4 mm <sup>2</sup> / 0,5 - 2,5 mm <sup>2</sup> / 20 - 12 AWG		
Rated Cross Section	2,5 mm <sup>2</sup>		
Wire Stripping Length	6 mm ± 0,5 mm		
Overvoltage Category	III	III	II
Pollution Severity Level	3	2	2
Rated Voltage	400 V	630 V	1000 V
Rated Impulse Voltage	6 kV	6 kV	6 kV
Rated Insulation Voltage	450 V acc. to EN 60998-1		
Rated Current	Through (total) current 25 A max., Plug connection 15 A max.		
Torque	0,5 Nm		
Other specifications	Rated values apply to use in combination with 322-SVW(-DS) and without insulated substrates.		

### Material

Moulding	PA, natur, V-2
Comparative Tracking Index	CTI ≥ 600
Insulating Group	I
Temperature Range	-40°C up to 100°C
Terminal Body	Nickel plated brass
Screw	M3, zinc plated steel, blue passivated
Wire protector	Tin plated tin bronze
Spring	Stainless steel strip

### Approvals

	Current [A]	Voltage [V]	Group	AWG	[Nm]
	20	300	B	18 - 12	0,51
	20	300	B	26 - 10	0,51 [1]
	20	150	C	26 - 10	0,51 [1]
	5	300	D,E	26 - 10	0,51 [1]

[1] for 323-PHFBW-DS: 26 - 12 AWG

### Options / Accessories

- Marking options on and between the screw guides
- Jumper 323-J