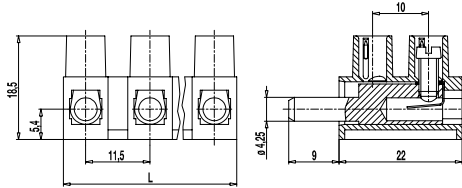
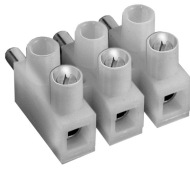


324-STFS(-DS)

Plug-in terminal strip
Screw connection & pin



The plug-in terminal strip 324-STFS is available in 11,5 mm pitch with 2 to 12 poles. It has one screw connection per pole and one vertical pin for the connection to the socket of the female counterpart.

This plug-in terminal strip was designed with a solid pin in order to provide reliable permanent contact to the socket of 324-STFB.

The wire protector of the "DS"-version reliably prevents damage to multi-wire flexible conductors by the turning screw. These terminal strips can be screw-mounted on a substrate.

Part Numbers

No. of poles	324-STFS	324-STFS-DS	Length	PU
2	72.823.004	12.823.017	21,00	1000
3	73.823.004	13.823.017	32,00	500
4	74.823.004	14.823.017	44,00	500
5	75.823.004	15.823.017	55,00	250
6	76.823.004	16.823.017	67,00	100
7	77.823.004	17.823.017	78,00	75
8	78.823.004	18.823.017	90,00	60
9	79.823.004	19.823.017	101,00	50
10	80.823.004	20.823.017	113,00	50
11	81.823.004	21.823.017	124,00	50
12	82.823.004	22.823.017	135,00	50

General Information

Pitch	11,5 mm
No. of poles	2 - 12
Usable with	324-STFB(-DS)
Areas of application	Applications that require to easily open and close not energised circuits.



Technical Data

Clamping Range	<i>solid / flexible / AWG</i>		
<i>without wire protector</i>	1 - 10 mm ² / 1 - 6 mm ² / 16 - 10 AWG		
<i>with wire protector</i>	0,75 - 6 mm ² / 0,75 - 4 mm ² / 18 - 12 AWG		
Rated Cross Section	4 mm ²		
Wire Stripping Length	7 mm ± 0,5 mm		
Overvoltage Category	III	III	II
Pollution Severity Level	3	2	2
Rated Voltage	250 V (500 V)	320 V (630 V)	630V (1000V)
Rated Impulse Voltage	4 kV (6 kV)	4 kV (6 kV)	4 kV (6 kV)
Rated Insulation Voltage	250 V acc. to EN 60998-1		
Rated Current	25 A		
Torque	0,8 Nm		
Other specifications	Rated values apply to use in combination with 324-STFB(-DS). Values in parentheses apply to use without insulated substrates.		

Material

Moulding	PA, natural, V-2
Comparative Tracking Index	CTI ≥ 600
Insulating Group	I
Temperature Range	-40°C up to 100°C
Screw	M3,5; zinc plated steel, blue passivated
Wire protector	Tin plated tin bronze
Plug	Nickel plated brass
Spring	Stainless steel strip

Approvals

	Current [A]	Voltage [V]	Group	AWG	[Nm]
	25	150	B,D	18 - 10	
	20	300	B	26 - 10	0,79
	10	300	D,E	26 - 10	0,79

Options / Accessories

- Marking options on and between the screw guides
- Jumper 324-J
- Leading plug for the protective conductor pole