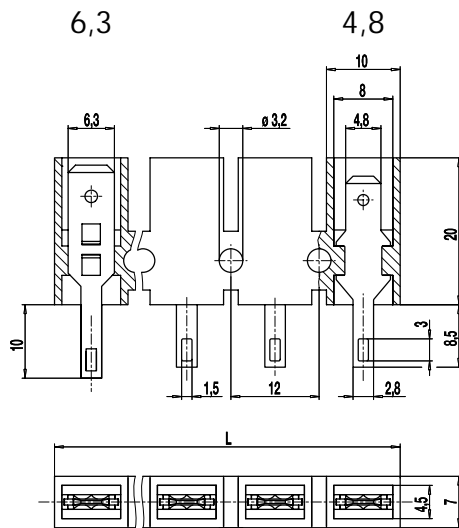
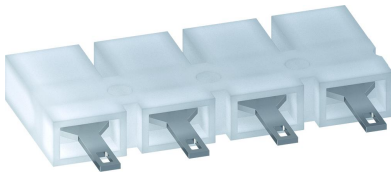


401-LFPA-4,8/-6,3

Tab/solder connector block



The combined tab/solder connector blocks are used primarily as connectors, cable splitter or as a base in electrical appliances and in automotive.

In the -LF version of the Type 401 a solder connection is located on the opposite side of the flat plug. The solder tags protrude approximately 8,5 mm from the housing. On the solder tag a flat plug sleeve B 2.8 x 0.8 can be inserted.

Depending on the application, this type is available with flat connectors 4,8 mm or 6,3 mm width in 1 to 12 pole design.

The insulation on the plug side can be done with our insulating ISO 187 on the tab 4,8 mm and ISO 110 with the solder joints. The tab connectors are suitable for flat plugs according to DIN 46247.

Part Numbers

| No. of poles | 401-LFPA-4,8 | 401-LFPA-6,3 | Length | A * | PU |
|--------------|--------------|--------------|--------|--------|------|
| 1 | 11.833.002 | 31.833.010 | 11,00 | | 2500 |
| 2 | 12.833.002 | 32.833.010 | 23,00 | | 1500 |
| 3 | 13.833.002 | 33.833.010 | 35,00 | 12,00 | 1000 |
| 4 | 14.833.002 | 34.833.010 | 47,00 | 24,00 | 800 |
| 5 | 15.833.002 | 35.833.010 | 59,00 | 36,00 | 200 |
| 6 | 16.833.002 | 36.833.010 | 71,00 | 48,00 | 250 |
| 7 | 17.833.002 | 37.833.010 | 83,00 | 60,50 | 250 |
| 8 | 18.833.002 | 38.833.010 | 95,00 | 72,50 | 250 |
| 9 | 19.833.002 | 39.833.010 | 107,00 | 84,50 | 200 |
| 10 | 20.833.002 | 40.833.010 | 119,00 | 96,50 | 150 |
| 11 | 21.833.002 | 41.833.010 | 131,00 | 108,50 | 150 |
| 12 | 22.833.002 | 42.833.010 | 142,00 | 120,50 | 150 |

* = Distance of the two outermost mounting holes

General Information

| | |
|--------------|--------|
| Pitch | 12 mm |
| No. of poles | 1 - 12 |



Technical Data

| | | | |
|--------------------------|--|-------|-------|
| Overvoltage Category | III | III | II |
| Pollution Severity Level | 3 | 2 | 2 |
| Rated Voltage | 400 V | 630 V | 1000V |
| Rated Impulse Voltage | 6 kV | 6 kV | 6 kV |
| Rated Insulation Voltage | 450 V acc. to EN 60998-1 | | |
| Rated Current | 15 A: with receptacle 4,8; wire 2,5 mm ² (14 AWG) 20 A: with receptacle 6,3; wire 6,0 mm ² (10 AWG) | | |
| Other specifications | Rated values apply to use in combination with insulated substrates. | | |

Material

| | |
|----------------------------|-------------------|
| Moulding | PA, natural, V-2 |
| Comparative Tracking Index | CTI ≥ 600 |
| Insulating Group | I |
| Temperature Range | -40°C up to 100°C |
| Tab | Tin plated brass |

Approvals

| | Current [A] | Voltage [V] | Group | AWG | [Nm] |
|---|-------------|-------------|-------|---------|--------|
|  | 15 | 300 | B | max. 10 | [1][2] |
|  | 15 | 300 | B | max. 10 | [1] |
| | 15 | 150 | C | max. 10 | [1] |
| | 10 | 300 | D,E | max. 10 | [1] |

[1] max. 14 AWG for solder side

[2] max. 16 AWG for solder side

Options / Accessories

- Consecutive numbering
- Special marking according to drawing
- Insulating sleeves ISO-110 for solder points and ISO-187 for receptacles
- Other tab connector variants available upon request, e.g. for the transition from 4.8 to 6.3