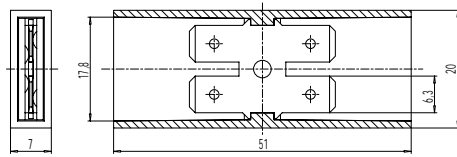


# 407-PA-PVC

Tab connector



407-PA  
407-PVC

Tab connector 407 is only available as 1-pole variant. It features double connections with 6,3 mm tabs. Pushed on tab receptacles 6,3 are completely covered by the housing.

## Part Numbers

No. of poles	407-PA	407-PVC	PU
1	20.830.040	20.830.030	400

## Part numbers: "no flame" acc. to glow-wire test

No. of poles	407-PA	407-PVC	PU
1	20.830.036.EN6		400

## General Information

No. of poles 1

## Technical Data

Overvoltage Category	III
Pollution Severity Level	3
Rated Voltage	500 V
Rated Impulse Voltage	6 kV
Rated Insulation Voltage	750 V acc. to EN 60998-1
Rated Current	20 A: with receptacle 6,3; wire 6,0 mm <sup>2</sup> (10 AWG)
Other specifications	Rated values apply to use without insulated substrates.

## Material

Moulding	PA, natural, V-2 (PA, white, V-0) Details in parentheses for "no flame" products Soft PVC, transparent, V-2
Comparative Tracking Index	PA: CTI ≥ 600; PVC: CTI 400
Insulating Group	PA: I; PVC: II
Temperature Range	PA: -40°C up to 100°C; PVC: -10°C up to 70°C
Tab	Nickel plated brass

## Options / Accessories

- Special marking according to drawing