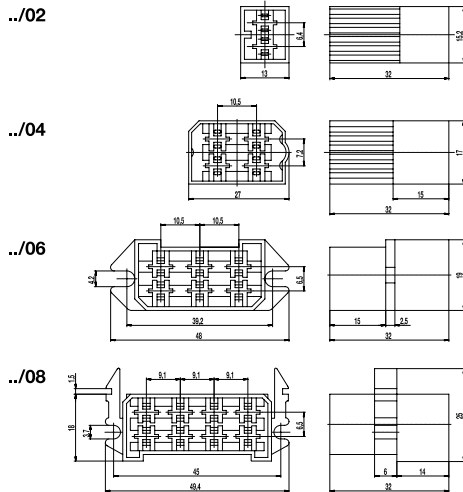
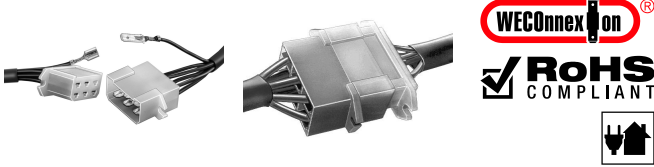


# 411-S

Flat plug housing  
for tabs 6,3 mm



Series 411 flat plug couplings are suited for electrical machines, vehicles, appliances and switch gear systems. After crimping the leads, the flat plugs are plugged into the 411-S flat plug housing. Index lobes on the metal part lock them into place in the housing. Subsequently, the housing/flat plug combination can now be connected with 411-B or 411-BML housing equipped with plug receptacles resulting in a flat plug coupling suitable in for switch gear applications.

The housing shape prevents false plugging. Pole identifiers are located on the plug openings of the metal parts.

Please note:  
Suitable flat plugs are not included in our product range.

## Part Numbers

No. of poles	411-S	PU
2	10.837.003	1000
4	10.837.005	1000
6	10.837.001	500
8	10.837.007	500

## Part numbers: "no flame" acc. to glow-wire test

No. of poles	411-S	PU
6	10.837.001.EN6	500

further number of poles on request

## General Information

No. of poles	2, 4, 6, 8
Usable with	Plug receptacles 411-B, 411-BML
Areas of application	for electrical machines, vehicles, appliances and switch gear systems

## Technical Data

Rated Cross Section	6,0 mm <sup>2</sup> / 10 AWG
Overvoltage Category	II
Pollution Severity Level	2
Rated Voltage	400 V
Rated Impulse Voltage	4 kV
Rated Current	20 A: with receptacle 6,3; wire 6,0 mm <sup>2</sup> (10 AWG)

## Material

Moulding	PA, natural, V-2 (PA, white, V-0) details in parentheses for "no flame" products
Comparative Tracking Index	CTI ≥ 600
Insulating Group	I
Temperature Range	-40°C up to 100°C