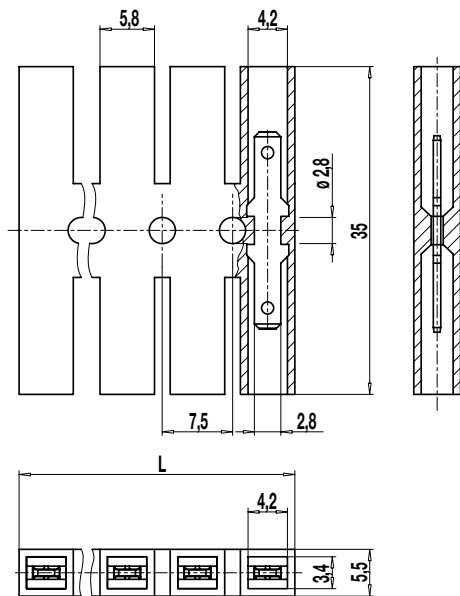
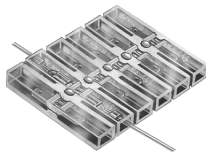


Tab connector block

444-B

with tabs 2,8



Tab connectors 444-B in 7,5 mm pitch are used as connectors, lead distributors or as electrical interface in equipment. They are available with 2,8 tabs in 1- to 12-pole design.

Tab connectors are suitable for tab receptacles according to DIN 46247. For this variant, pushed on tab receptacles are completely covered, allowing to stack 2-pole or more tab connector blocks on top of each other.

Part Numbers

No. of poles	444-B	Length	A *	PU
1	31.835.001	7,50		800
2	32.835.001	15,00		400
3	33.835.001	22,50	7,50	250
4	34.835.001	30,00	15,00	500
5	35.835.001	37,50	22,50	500
6	36.835.001	45,00	30,00	200
7	37.835.001	52,50	37,50	100
8	38.835.001	60,00	45,00	100
9	39.835.001	67,50	52,50	100
10	40.835.001	75,00	60,00	50
11	41.835.001	82,50	67,50	50
12	42.835.001	88,00	75,50	100

* = Distance of the two outermost mounting holes

General Information

Pitch	7,5 mm
No. of poles	1 - 12

Technical Data

Overvoltage Category	III	III	II
Pollution Severity Level	3	2	2
Rated Voltage	250 V	320 V	500 V
Rated Impulse Voltage	4 kV	4 kV	4 kV
Rated Insulation Voltage	450 V acc. to EN 60998-1		
Rated Current	6 A: with receptacle 2,8; wire 1 mm ² (16 AWG)		
Other specifications	Rated values apply to use in combination with insulated substrates.		

Material

Moulding	Soft PVC, transparent, V-2
Comparative Tracking Index	CTI 400
Insulating Group	II
Temperature Range	-10°C up to 70°C
Tab	Tin plated brass

Options / Accessories

- Consecutive numbering
- Special marking according to drawing