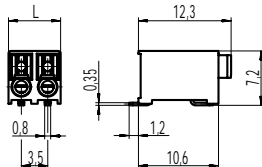
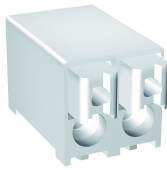
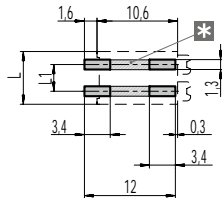


# 830-A-111-SMD

PCB connector for SMD  
Push-In connection



## PCB Layout (Recommendation)



L = (No. of poles) x pitch  
L1 = (No. of poles - 1) x pitch  
Solder paste thickness: 0,15 - 0,2 mm

\* = Both solder pads of each pole can be connected together.

The PCB terminal block 830-A-111-SMD with the pitch of 3,5 mm offers strong performance in the smallest space. The position of the entries in parallel to the printed circuit board enables the advantageous application within housings with external connection. Due to the very small space requirement and the white colour it is ideally suited to various applications in the lighting industry.

The front of the terminal is equipped with pushers to be handled with standard screwdrivers for the removal of the parallel connected conductors.

The easy to use spring system allows beside the use of 1 mm<sup>2</sup> solid wires also the connection of 0,75 mm<sup>2</sup> flexible by use of the pushers.

The advanced design of this high temperature resistant terminal allows in the area of the solder pins the free circulation of hot air in the convection oven during the reflow soldering process.

The standard packaging in Tape-on-Reel makes this terminal very suitable for its automatic pick & place in the production line.

## Part Numbers: Bar magazines

No. of poles	830-A-111-SMD		Length	PU
2	10.813.002 (49 bar mag.)		6,90	3626
3	10.813.003 (49 bar mag.)		10,40	2401
2	10.813.002.B00 (4 bar mag.)		6,90	296
3	10.813.003.B00 (4 bar mag.)		10,40	196

## General Information

Pitch	3,5 mm
No. of poles	2 + 3
Areas of application	Lighting technology, devices

## Technical Data

Clamping Range	<i>solid / flexible / AWG</i>		
	0,2 - 1,0 mm <sup>2</sup> / 0,2 - 0,75 mm <sup>2</sup> / 24 - 18 AWG		
Rated Cross Section	1 mm <sup>2</sup> (starr / solid) / 0,75 mm <sup>2</sup>		
Wire Stripping Length	7,5 mm ± 0,5 mm		
Overvoltage Category	III	III	II
Pollution Severity Level	3	2	2
Rated Voltage	160 V	160 V	320 V
Rated Impulse Voltage	2,5 kV	2,5 kV	2,5 kV
Rated Insulation Voltage	130 V acc. to EN 60998-1		
Rated Current	13,5 A apply to 1 mm <sup>2</sup> solid 9 A apply to 0,75 mm <sup>2</sup>		
Soldering process	Reflow solder		

## Material

Moulding	PA HT, white, V-0
Comparative Tracking Index	CTI ≥ 600
Insulating Group	I
Temperature Range	-40°C up to 120°C; reflow solder temperature peak max. 255°C acc. to DIN EN 61760-1
Terminal body	Tin plated copper alloy
Spring	Stainless steel

## Approvals

	Current [A]	Voltage [V]	Group	AWG	[Nm]
	6	300	B	24 - 18	

## Options / Accessories

- Consecutive numbering
- Special marking according to drawing
- Black colour on request

## Part Numbers: Tape-on-Reel

No. of poles	830-A-111-SMD	Tape Width	Tape Height	PU
2	10.813.002.A00	24 mm	8,4 mm	550
3	10.813.003.A00	24 mm	8,4 mm	550