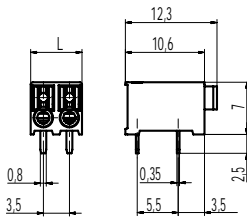
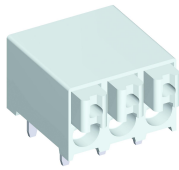
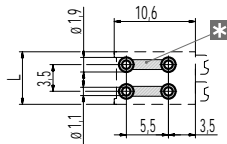


830-A-111-THR

PCB connector for SMD
Push-In connection



PCB Layout (Recommendation)



L = (No. of poles) x pitch
L1 = (No. of poles - 1) x pitch
Solder paste thickness: 0,15 - 0,2 mm
solder pad, outside diameter: \varnothing 1,9 mm

* = Both solder pads of each pole can be connected together.

The PCB terminal block 830-A-111-THR with the pitch of 3,5 mm offers strong performance in the smallest space. The position of the entries in parallel to the printed circuit board enables the advantageous application within housings with external connection. Due to the very small space requirement and the white colour it is ideally suited to various applications in the lighting industry.

The front of the terminal is equipped with pushers to be handled with standard screwdrivers for the removal of the parallel connected conductors.

The easy to use spring system allows beside the use of 1 mm² solid wires also the connection of 0,75 mm² flexible by use of the pushers.

The advanced design of this high temperature resistant terminal allows in the area of the solder pins the free circulation of hot air in the convection oven during the reflow soldering process.

Part Numbers

| No. of poles | 830-A-111-THR | Length | PU |
|--------------|-----------------------------|--------|-----|
| 2 | 10.813.052 | 6,90 | 250 |
| 3 | 10.813.053 | 10,40 | 250 |
| 2 | 10.813.052.B00 (2 bar mag.) | 6,90 | 150 |
| 3 | 10.813.053.B00 (2 bar mag.) | 10,40 | 100 |

General Information

| | |
|----------------------|------------------------------|
| Pitch | 3,5 mm |
| No. of poles | 2 + 3 |
| Areas of application | Lighting technology, devices |

Technical Data

| | | | |
|--------------------------|--|--------|--------|
| Clamping Range | <i>solid / flexible / AWG</i> | | |
| | 0,2 - 1,0 mm ² / 0,2 - 0,75 mm ² / 24 - 18 AWG | | |
| Rated Cross Section | 1 mm ² (starr / solid) / 0,75 mm ² | | |
| Wire Stripping Length | 7,5 mm \pm 0,5 mm | | |
| Overvoltage Category | III | III | II |
| Pollution Severity Level | 3 | 2 | 2 |
| Rated Voltage | 160 V | 160 V | 320 V |
| Rated Impulse Voltage | 2,5 kV | 2,5 kV | 2,5 kV |
| Rated Insulation Voltage | 130 V acc. to EN 60998-1 | | |
| Rated Current | 13,5 A apply to 1 mm ² solid 9 A apply to 0,75 mm ² | | |
| Soldering process | Reflow solder | | |
| Hole in PCB | \varnothing 1,1 mm | | |

Material

| | |
|----------------------------|---|
| Moulding | PA HT, white, V-0 |
| Comparative Tracking Index | CTI \geq 600 |
| Insulating Group | I |
| Temperature Range | -40°C up to 120°C; reflow solder temperature peak max. 255°C acc. to DIN EN 61760-1 |
| Terminal body | Tin plated copper alloy |
| Spring | Stainless steel |

Approvals

| | Current [A] | Voltage [V] | Group | AWG | [Nm] |
|--|-------------|-------------|-------|---------|------|
| | 6 | 300 | B | 24 - 18 | |

Options / Accessories

- Consecutive numbering
- Special marking according to drawing
- Black colour on request
- Tape-on-Reel on request