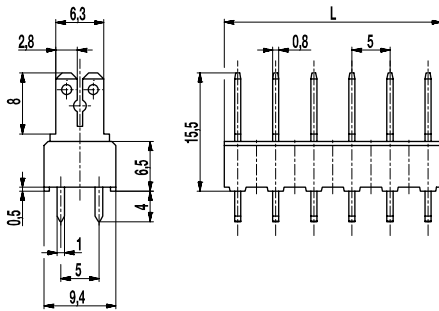
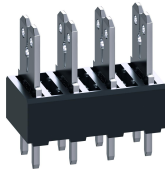


## 900-F-S-5

Tab connector

Tab 2x 2,8 mm / 1x 6,3 mm, with pegs



The tab connector 900-F-S-5 with a pitch of 5 mm is a raised 900-S-5 version and designed for tab receptacles of 1x 2.8 mm or 1x 6.3 mm.

The tab connector housing of series 900-F was raised for this special variant. The enormous variety of different tab connector designs and their mixed mounting increase the versatility of this series. When potting the tab connector moulding, the casting resin can penetrate between the raised feet from below without affecting the blade connection area.

Depending on the respective application, the series 900-F allows to plug in bare, partially or fully insulated tab receptacles according to DIN 46247. Also non-insulated 2.8 mm or 6.3 mm tab receptacles can be plugged on these tab connectors. Insulation receptacles ISO-25 (see also ISO product data sheet) can be used to insulate 2.8 mm or 6.3 mm tab receptacles.

Insulation sockets are available for 6.3 mm tab connectors with double-spring contacts (see also ISO-900 product data sheet).

### Part Numbers

No. of poles	900-F-S-5	Length	PU
5	50.870.710	23,50	100

further number of poles on request

### General Information

Pitch	5 mm
No. of poles	2 - 25


### Technical Data

Overvoltage Category	III	III	II
Pollution Severity Level	3	2	2
Rated Voltage	320 V	320 V	630 V
Rated Impulse Voltage	4 kV	4 kV	4 kV
Rated Insulation Voltage	450 V acc. to EN 60998-1		
Rated Current	7,5 A: with receptacles 2,8; wire 1 mm <sup>2</sup> (16 AWG) 15 A: with receptacles 6,3; wire 2,5 mm <sup>2</sup> (14 AWG)		
Hole in PCB	ø 1,6 mm		
Other specifications	Indicated rated voltages refer to applications with insulation receptacles		

### Material

Moulding	PA, grey, V-0
Comparative Tracking Index	CTI ≥ 600
Insulating Group	I
Temperature Range	-40°C up to 100°C
Solder pin	1,0 x 0,8 mm; tin plated brass
Tab	2,8 x 0,8 mm; 6,3 x 0,8 mm; tin plated brass

### Approvals

	Current [A]	Voltage [V]	Group	AWG	[Nm]
	15	150	B		

### Options / Accessories

- Consecutive numbering
- Special marking according to drawing
- Self-adhesive marking strip BST-5,00
- Insulation receptacles ISO
- Insulation sockets ISO-900
- Change of pitch
- Component mix of tab connector versions
- Tab connectors are also individually available (see single tabs GST-900)