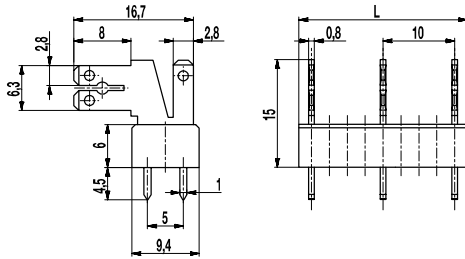
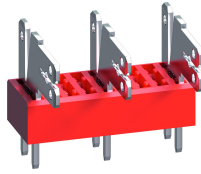


## 900-W-10

Tab connector  
Tabs with 90° angle



The tab connector 900-W-10 with double solder termination and a pitch of 10 mm is designed for 1x 2,8 mm and 1x 2,8 mm / 1x 6,3 mm tab connector receptacles.

Depending on the respective application, the tab connectors of series 900 allow to plug in bare, partially or fully insulated tab receptacles according to DIN 46247. A non-insulated 2,8 mm or a 6,3 mm (optionally also insulated) tab connector receptacle can be plugged in the angled plug-in area of the tab connector. To the vertical tab connector, a non-insulated 2,8 mm tab connector receptacle can also be connected. Insulation receptacles ISO-25 and ISO-250 (see also ISO product data sheet) can be used to insulate 6,3 mm tab receptacles.

### Part Numbers

No. of poles	900-W-10	Length	PU
2	30.870.903	13,50	250
3	30.870.905	23,50	100
4	30.870.907	33,50	100
5	30.870.909	43,50	100
6	30.870.911	53,50	100
7	30.870.913	63,50	100
8	30.870.915	73,50	50
9	30.870.917	83,50	50
10	30.870.919	93,50	50
11	30.870.921	103,50	50
12	30.870.923	113,50	50
13	30.870.925	123,50	50

further number of poles on request

### General Information

Pitch	10 mm
No. of poles	2 - 13



### Technical Data

Overvoltage Category	III	III	II
Pollution Severity Level	3	2	2
Rated Voltage	630 V	630 V	1000 V
Rated Impulse Voltage	6 kV	6 kV	6 kV
Rated Insulation Voltage	750 V acc. to EN 60998-1		
Rated Current	7,5 A: with receptacles 2,8; wire 1 mm <sup>2</sup> (16 AWG) 15 A: with receptacles 6,3; wire 2,5 mm <sup>2</sup> (14 AWG)		
Hole in PCB	ø 1,6 mm		
Other specifications	Indicated rated voltages refer to applications with insulation receptacles		

### Material

Moulding	PA, red, V-0
Comparative Tracking Index	CTI ≥ 600
Insulating Group	I
Temperature Range	-40°C up to 100°C
Solder pin	1,0 x 0,8 mm; tin plated brass
Tab	2,8 x 0,8 mm; 6,3 x 0,8 mm; tin plated brass

### Approvals

	Current [A]	Voltage [V]	Group	AWG	[Nm]
	15	300	B		
	15	150	C		
	15	300	B		
	10	300	D, E		

### Options / Accessories

- Consecutive numbering
- Special marking according to drawing
- Self-adhesive marking strip BST-10,00
- Insulation receptacles ISO
- Change of pitch
- Component mix of tab connector versions
- Tab connectors are also individually available (see single tabs GST-900)