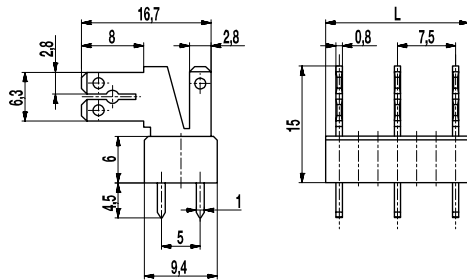
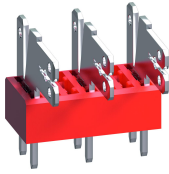


## 900-W-7,5

Tab connector  
Tabs with 90° angle



The tab connector 900-W-7,5 with double solder termination and a pitch of 7,5 mm is designed for 1x 2,8 mm and 1x 2,8 mm / 1x 6,3 mm tab connector receptacles.

Depending on the respective application, the tab connectors of series 900 allow to plug in bare, partially or fully insulated tab receptacles according to DIN 46247. A non-insulated 2,8 mm or a 6,3 mm (optionally also insulated) tab connector receptacle can be plugged in the angled plug-in area of the tab connector. To the vertical tab connector, a non-insulated 2,8 mm tab connector receptacle can also be connected. Insulation receptacles ISO-25 and ISO-250 (see also ISO product data sheet) can be used to insulate 6,3 mm tab receptacles.

### Part Numbers

| No. of poles | 900-W-7,5  | Length | PU  |
|--------------|------------|--------|-----|
| 2            | 27.870.903 | 11,00  | 250 |
| 3            | 27.870.904 | 18,50  | 200 |
| 4            | 27.870.906 | 26,00  | 100 |
| 5            | 27.870.907 | 33,50  | 100 |
| 6            | 27.870.909 | 41,00  | 100 |
| 7            | 27.870.910 | 48,50  | 100 |
| 8            | 27.870.912 | 56,00  | 100 |
| 9            | 27.870.913 | 63,50  | 100 |
| 10           | 27.870.915 | 71,00  | 50  |
| 11           | 27.870.916 | 78,50  | 50  |
| 12           | 27.870.918 | 86,00  | 50  |
| 13           | 27.870.919 | 93,50  | 50  |
| 14           | 27.870.921 | 101,00 | 50  |
| 15           | 27.870.922 | 108,50 | 50  |
| 16           | 27.870.924 | 116,00 | 50  |
| 17           | 27.870.925 | 123,50 | 50  |

### General Information

|              |        |
|--------------|--------|
| Pitch        | 7,5 mm |
| No. of poles | 2 - 17 |



### Technical Data

|                          |   |       |        |
|--------------------------|---|-------|--------|
| Overvoltage Category     | III   | III   | II     |
| Pollution Severity Level | 3   | 2     | 2      |
| Rated Voltage            | 500 V   | 630 V | 1000 V |
| Rated Impulse Voltage    | 6 kV  | 6 kV  | 6 kV   |
| Rated Insulation Voltage | 750 V acc. to EN 60998-1  |       |        |
| Rated Current            | 7,5 A: with receptacles 2,8; wire 1 mm <sup>2</sup> (16 AWG)<br>15 A: with receptacles 6,3; wire 2,5 mm <sup>2</sup> (14 AWG) |       |        |
| Hole in PCB              | ø 1,6 mm  |       |        |
| Other specifications     | Indicated rated voltages refer to applications with insulation receptacles  |       |        |

### Material

|                            |  |
|----------------------------|--|
| Moulding                   | PA, red, V-0                                 |
| Comparative Tracking Index | CTI ≥ 600                                    |
| Insulating Group           | I  |
| Temperature Range          | -40°C up to 100°C                            |
| Solder pin                 | 1,0 x 0,8 mm; tin plated brass               |
| Tab                        | 2,8 x 0,8 mm; 6,3 x 0,8 mm; tin plated brass |

### Approvals

|   | Current [A] | Voltage [V] | Group | AWG | [Nm] |
|---|-------------|-------------|-------|-----|------|
|  | 15          | 300         | B     |     |      |
|   | 15          | 150         | C     |     |      |
|  | 15          | 300         | B     |     |      |
|   | 10          | 300         | D, E  |     |      |

### Options / Accessories

- Consecutive numbering
- Special marking according to drawing
- Self-adhesive marking strip BST-7,50
- Insulation receptacles ISO
- Change of pitch
- Component mix of tab connector versions
- Tab connectors are also individually available (see single tabs GST-900)