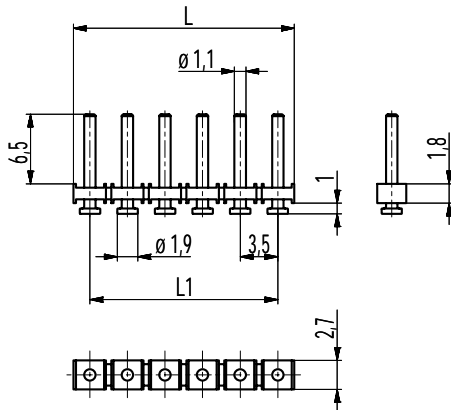
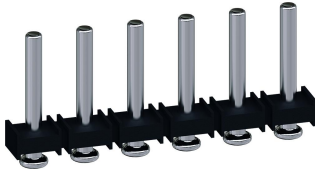


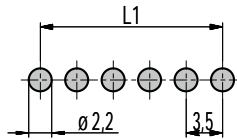
931-SLR-SMD-1,1

Pin strip for SMD
Plug-in area \varnothing 1,1 mm



$$L1 = (\text{No. of poles} - 1) \times \text{pitch}$$

PCB Layout



Solder paste thickness: 0,15 - 0,2 mm

The pin strip 931-SLR-SMD-1,1 for the application in a reflow soldering process in genuine SMD technology and with a pitch of 3,5 mm is available in 2 to 16 pole design.

It comes with a constant pin diameter of 1,1 mm at the plug-in area.

Contrary to the pin strips 931-SLR-THR and 931-SLR-THR-1,1, for which holes in the PCB are necessary, the SMD types of WECO base on true surface assembly. Soldering expands at the end of the pins guarantee optimal retention force on the printed circuit board.

Just like all THR versions of WECO, also the housings of the SMD series are made out of high temperature resistant plastic material and exhibit a very high CTI value. For the automatic assembling all pin strips of this series are packed in Tape-on-Reel and equipped with high temperature resistant Pick Caps, which can easily be removed after the soldering process.

Part Numbers

No. of poles	931-SLR-SMD-1,1	Length	PU
2	12.893.732	6,50	1000
3	13.893.732	10,00	1000
4	14.893.732	13,50	500
5	15.893.732	17,00	500
6	16.893.732	20,50	500
8	18.893.732	27,50	250
10	20.893.732	34,50	200
12	22.893.732	41,50	200
16	26.893.732	55,50	200

further number of poles on request

General Information

Pitch	3,5 mm
No. of poles	2 - 16
Usable with	plug connector 930-FL(-DS)
Additional Information	Also, please take into consideration the pin strips 931-SLS for wave soldering and series 931-SLR-THR for Through-Hole-Reflow.

Technical Data

Overvoltage Category	III	III	II
Pollution Severity Level	3	2	2
Rated Voltage	160 V	160 V	320 V
Rated Impulse Voltage	2,5 kV	2,5 kV	2,5 kV
Rated Insulation Voltage	130 V acc. to EN 60998-1		
Rated Current	6 A		
Soldering process	Reflow solder		

Material

Moulding	PA HT, black, V-0
Comparative Tracking Index	CTI \geq 600
Insulating Group	I
Temperature Range	-40°C up to 120°C; reflow solder temperature peak max. 255°C acc. to DIN EN 61760-1
Solder pin	\varnothing 1,1 mm (plug-in area); tin plated brass

Approvals

	Current [A]	Voltage [V]	Group	AWG	[Nm]
	6	150	B		
	6	300	D		
	6	150	B		
	6	300	D		

Options / Accessories

- Other plug pin lengths on request
- Other solder pin surfaces on request

Part Numbers: Tape-on-Reel

No. of poles	931-SLR-SMD-1,1	Tape Width	Tape Height	PU
2	12.893.732.A00	24 mm	14,8 mm	500
3	13.893.732.A00	32 mm	14,6 mm	500
4	14.893.732.A00	32 mm	14,6 mm	500
5	15.893.732.A00	32 mm	14,6 mm	500
6	16.893.732.A00	56 mm	14,6 mm	500
7	17.893.732.A00	56 mm	14,6 mm	500
8	18.893.732.A00	56 mm	14,6 mm	500
9	19.893.732.A00	56 mm	14,6 mm	500
10	20.893.732.A00	56 mm	14,6 mm	500
11	21.893.732.A00	56 mm	14,6 mm	500
12	22.893.732.A00	72 mm	14,9 mm	500
13	23.893.732.A00	72 mm	14,9 mm	500
14	24.893.732.A00	72 mm	14,9 mm	500

further number of poles on request