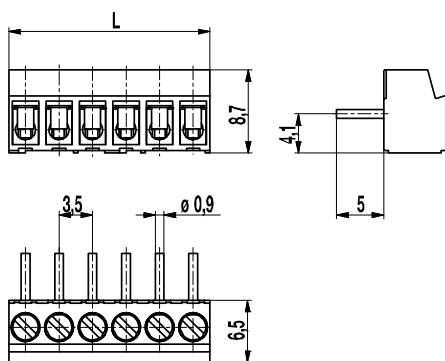
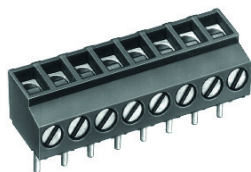


PCB connector

931(-DS)

Screw connection, wire entrance vertical to PCB



Series 931 Mini PCB connectors are designed with a pitch of 3,5 mm, can be mounted side-by-side without pole loss, and come equipped with captive screws. DS-types are provided with wire protection which reliably prevents damage to flexible conductors.

Part Numbers

No. of poles	931	931-DS	Length	Pcs
2	10.870.502	20.870.502	7,00	250
3	10.870.503	20.870.503	10,50	250
4	10.870.504	20.870.504	14,00	250
5	10.870.505	20.870.505	17,50	200
6	10.870.506	20.870.506	21,00	200
7	10.870.507	20.870.507	24,50	100
8	10.870.508	20.870.508	28,00	100
9	10.870.509	20.870.509	31,50	100
10	10.870.510	20.870.510	35,00	100
11	10.870.511	20.870.511	38,50	100
12	10.870.512	20.870.512	42,00	100
13	10.870.513	20.870.513	45,50	100
14	10.870.514	20.870.514	49,00	100
15	10.870.515	20.870.515	52,50	100
16	10.870.516	20.870.516	56,00	100
17	10.870.517	20.870.517	59,50	100
18	10.870.518	20.870.518	63,00	100
19	10.870.519	20.870.519	66,50	100
20	10.870.520	20.870.520	70,00	100
21	10.870.521	20.870.521	73,50	100
22	10.870.522	20.870.522	77,00	100
23	10.870.523	20.870.523	80,50	100
24	10.870.524	20.870.524	84,00	100

General Information

Pitch	3,5 mm
No. of poles	2 - 24

Technical Data

Clamping Range	<i>solid / flexible / AWG</i>		
	<i>without wire protector</i> 0,75 - 1,5 mm ² / 0,75 - 1,5 mm ² / 18 - 16 AWG		
	<i>with wire protector</i> 0,34 - 1,5 mm ² / 0,34 - 1 mm ² / 22 - 16 AWG		
Rated Cross Section	1 mm ²		
Wire Stripping Length	5 mm ± 0,5 mm		
Overvoltage Category	III	III	II
Pollution Severity Level	3	2	2
Rated Voltage	160 V	160 V	320 V
Rated Impulse Voltage	2,5 kV	2,5 kV	2,5 kV
Rated Insulation Voltage	130 V acc. to EN 60998-1		
Rated Current	13,5 A		
Hole in PCB	ø 1,2 mm		
Torque	0,2 Nm		

Material

Moulding	PA, grey, V-0
Comparative Tracking Index	CTI ≥ 600
Insulating Group	I
Temperature Range	-40°C up to 100°C
Terminal body	Tin plated brass
Screw	M2, zinc plated steel, blue passivated
Solder pin	ø 0,9 mm; tin plated brass
Wire protector	German silver

Approvals

	Current	Voltage	Group	AWG	Nm
	10	300	B	26 - 16	0,23
	10	300	B	26 - 16	0,2

Options / Accessories

- Consecutive numbering
- Special marking according to drawing
- Self-adhesive marking strip BST-3,50
- Pitch of 7 mm for larger clearance and creepage distances