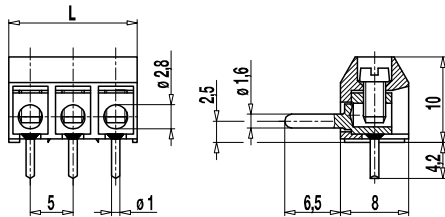
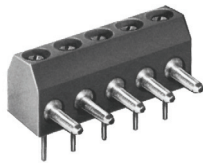


Plug connector 950-SVG

Screw connection, with solder pin



Part Numbers

No. of poles	950-SVG	Length	Pcs
2	90.871.012	10,00	200
3	90.871.083	15,00	100
4	90.871.084	20,00	100
5	90.871.085	25,00	100
6	90.871.086	30,00	50
7	90.871.022	35,00	50
8	90.871.018	40,00	50
9	90.871.019	45,00	50
10	90.871.020	50,00	50
11	90.871.021	55,00	50
12	90.871.082	60,00	50
13	90.871.023	65,00	25
14	90.871.024	70,00	25
15	90.871.025	75,00	25
16	90.871.026	80,00	25
17	90.871.027	85,00	25
18	90.871.028	90,00	25
19	90.871.029	95,00	25
20	90.871.030	100,00	25
21	90.871.031	105,00	25
22	90.871.032	110,00	25
23	90.871.039	115,00	25
24	90.871.040	120,00	25
25	90.871.041	125,00	25
26	90.871.042	130,00	25
27	90.871.037	135,00	25
28	90.871.088	140,00	20
29	90.871.089	145,00	20
30	90.871.090	150,00	20
31	90.871.091	155,00	20
32	90.871.092	160,00	20

General Information

Pitch	5 mm
No. of poles	2 - 32
Usable with	plug connector 971-FBS
Additional Information	Can be used as a three-way contact

Technical Data

Clamping Range	<i>solid / flexible / AWG</i> 0,75 - 4 mm ² / 0,75 - 2,5 mm ² / 18 - 12 AWG		
Rated Cross Section	1,5 mm ²		
Wire Stripping Length	5 mm ± 0,5 mm		
Overvoltage Category	III	III	II
Pollution Severity Level	3	2	2
Rated Voltage	160 V	160 V	320 V
Rated Impulse Voltage	2,5 kV	2,5 kV	2,5 kV
Rated Insulation Voltage	130 V acc. to EN 60998-1		
Rated Current	6 A		
Hole in PCB	ø 1,3 mm		
Torque	0,4 Nm		
Other specifications	2-8 poles types are "no-flame" acc. to glow-wire test.		

Material

Moulding	PA, grey, V-0
Comparative Tracking Index	2-8 poles: CTI ≥ 600; 9-32 poles: CTI 400
Insulating Group	2-8 poles: I; 9-32 poles: II
Temperature Range	-40°C up to 100°C
Terminal body	Tin plated brass
Screw	M2,6; zinc plated steel, blue passivated
Solder pin	ø 1 mm; tin plated copper
Plug	ø 1,6 mm; tin plated brass

Approvals

	Current	Voltage	Group	AWG	Nm
	7	300	B	26 - 14	0,4
	7	300	B	26 - 14	0,4

Options / Accessories

- Consecutive numbering
- Special marking according to drawing
- Self-adhesive marking strip BST-5,00
- Pitch of 10 mm for larger clearance and creepage distances
- Longer P.C. pins up to 75 mm