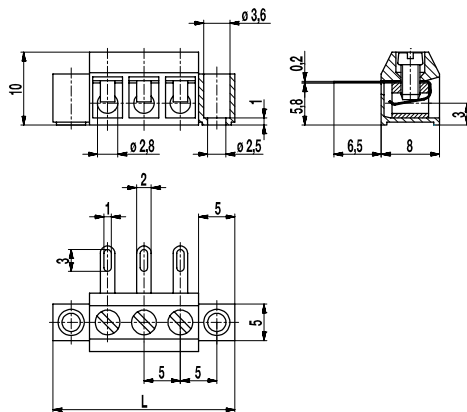
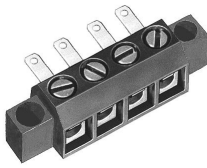


## 951-A-LFDS

Screw/solder terminal strip  
Screw/solder tag connection



The screw/solder terminal strip 951-A-LFDS with a pitch of 5 mm is available in 2- to 12-pole design.

It requires only little mounting space and is well suited for low-voltage applications.

The solder tag is formed as a wire protector. The wire protection reliably prevents damage to multi-wire flexible conductors by the turning screw.

The moulding can also be mounted using the lateral flanges.

### Part Numbers

| No. of poles | 951-A-LFDS | Length | PU  |
|--------------|------------|--------|-----|
| 2            | 20.871.252 | 20,00  | 250 |
| 3            | 20.871.253 | 25,00  | 250 |
| 4            | 20.871.254 | 30,00  | 200 |
| 5            | 20.871.255 | 35,00  | 100 |
| 6            | 20.871.256 | 40,00  | 100 |
| 7            | 20.871.257 | 45,00  | 100 |
| 8            | 20.871.258 | 50,00  | 100 |
| 9            | 20.871.259 | 55,00  | 100 |
| 10           | 20.871.260 | 60,00  | 50  |
| 11           | 20.871.261 | 65,00  | 50  |
| 12           | 20.871.262 | 70,00  | 50  |

### General Information

|              |        |
|--------------|--------|
| Pitch        | 5 mm   |
| No. of poles | 2 - 12 |



### Technical Data

|                          |   |        |        |
|--------------------------|---|--------|--------|
| Clamping Range           | <i>solid / flexible / AWG</i>   |        |        |
|                          | 0,34 - 2,5 mm <sup>2</sup> / 0,34 - 2,5 mm <sup>2</sup> / 22 - 14 AWG |        |        |
| Rated Cross Section      | 1,5 mm <sup>2</sup>   |        |        |
| Wire Stripping Length    | 6 mm ± 0,5 mm   |        |        |
| Overvoltage Category     | III   | III    | II     |
| Pollution Severity Level | 3   | 2      | 2      |
| Rated Voltage            | 160 V   | 160 V  | 320 V  |
| Rated Impulse Voltage    | 2,5 kV  | 2,5 kV | 2,5 kV |
| Rated Insulation Voltage | 130 V acc. to EN 60998-1  |        |        |
| Rated Current            | 6 A   |        |        |
| Torque                   | 0,4 Nm  |        |        |

### Material

|                            |  |
|----------------------------|--|
| Moulding                   | PA, grey, V-0                            |
| Comparative Tracking Index | CTI ≥ 600                                |
| Insulating Group           | I  |
| Temperature Range          | -40°C up to 100°C                        |
| Terminal Body              | Nickel plated brass                      |
| Screw                      | M2,6; zinc plated steel, blue passivated |
| Wire protector             | Tin plated tin bronze                    |

### Approvals

|   | Current [A] | Voltage [V] | Group | AWG     | [Nm] |
|---|-------------|-------------|-------|---------|------|
|  | 15          | 300         | B     | 26 - 14 | 0,4  |
|  | 15          | 300         | B     | 26 - 14 | 0,4  |

### Options / Accessories

- Consecutive numbering
- Special marking according to drawing
- Self-adhesive marking strip BST-5,00
- Larger number of poles