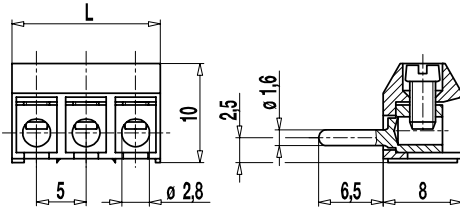


951-SV(-DS)

Plug connector

Screw connection, pin \varnothing 1,6 mm



Part Numbers

No. of poles	951-SV	951-SV-DS	Length	PU
2	80.871.012	86.871.012	10,00	250
3	80.871.083	86.871.083	15,00	250
4	80.871.084	86.871.084	20,00	200
5	80.871.085	86.871.085	25,00	100
6	80.871.086	86.871.086	30,00	100
7	80.871.022	86.871.022	35,00	100
8	80.871.018	86.871.018	40,00	100
9	80.871.019	86.871.019	45,00	100
10	80.871.020	86.871.020	50,00	100
11	80.871.021	86.871.021	55,00	100
12	80.871.082	86.871.082	60,00	100
13	80.871.023	86.871.082	65,00	100
14	80.871.024	86.871.024	70,00	50
15	80.871.025	86.871.025	75,00	50
16	80.871.026	86.871.026	80,00	100
17	80.871.027	86.871.027	85,00	50
18	80.871.028	86.871.028	90,00	50
19	80.871.029	86.871.029	95,00	50
20	80.871.030	86.871.030	100,00	50
21	80.871.031	86.871.031	105,00	25
22	80.871.032	86.871.032	110,00	25
23	80.871.039	86.871.039	115,00	25
24	80.871.040	86.871.040	120,00	25
25	80.871.041	86.871.041	125,00	25
26	80.871.042	86.871.042	130,00	25
27	80.871.037	86.871.037	135,00	25
28	80.871.088	86.871.088	140,00	25
29	80.871.089	86.871.089	145,00	25
30	80.871.090	86.871.090	150,00	25
31	80.871.091	86.871.091	155,00	25
32	80.871.092	86.871.092	160,00	25

General Information

Pitch	5 mm
No. of poles	2 - 32
Usable with	plug connectors 950-FB, 951-FB, 971-FBS(-DS)




Technical Data

Clamping Range	<i>solid / flexible / AWG</i>		
<i>without wire protector</i>	0,75 - 4 mm ² / 0,75 - 2,5 mm ² / 18 - 12 AWG		
<i>with wire protector</i>	0,34 - 2,5 mm ² / 0,34 - 2,5 mm ² / 22 - 14 AWG		
Rated Cross Section	1,5 mm ²		
Wire Stripping Length	5 mm \pm 0,5 mm		
Oversvoltage Category	III	III	II
Pollution Severity Level	3	2	2
Rated Voltage	160 V	160 V	320 V
Rated Impulse Voltage	2,5 kV	2,5 kV	2,5 kV
Rated Current	6 A		
Torque	0,4 Nm		
Other specifications	2-8 poles types are "no-flame" acc. to glow-wire test.		

Material

Moulding	PA, grey, V-0
Comparative Tracking Index	2-8 poles: CTI \geq 600; 9-32 poles: CTI 400
Insulating Group	2-8 poles: I; 9-32 poles: II
Temperature Range	-40°C up to 100°C
Terminal body	Tin plated brass
Screw	M2,6; zinc plated steel, blue passivated
Wire protector	Tin plated tin bronze
Plug	\varnothing 1,6 mm; tin plated brass

Approvals

	Current [A]	Voltage [V]	Group	AWG	[Nm]
	7	300	B	26 - 14	0,4
	7	300	B	26 - 14	0,4
	Current [A]	Voltage [V]	[mm ²]		
	13,5	160	1,5 [1]		

[1] Acc. to IEC 60947-7-4 und IEC 60947-1

Options / Accessories

- Consecutive numbering
- Special marking according to drawing
- Self-adhesive marking strip BST-5,00
- Pitch of 10 mm for larger clearance and creepage distances
- Version with lateral fastening flanges (951-B-SV(-DS))