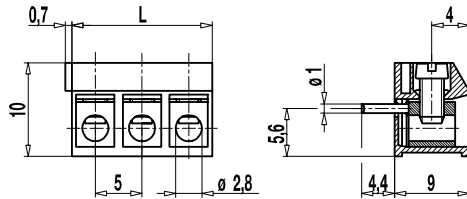


951-THG(-DS)

PCB connector

Screw connection, wire entrance vertical to PCB, extended insertion length, interlocking



On version 951-THG(-DS) the copper solder pin is welded on top of the socket bore which expands the insertion length to series 950 socket depth and allows to use extra-long solder pins.

Wire protection in DS-design reliably prevents damage to stranded wires by the screw.

Lateral latching elements allow to link this type of screw connector with terminal strips of any length.

Part Numbers

No. of poles	951-THG	951-THG-DS	Length	PU
2	10.871.622	20.871.622	10,00	250
3	10.871.623	20.871.623	15,00	250

General Information

Pitch	5 mm
No. of poles	2 + 3



Technical Data

Clamping Range	<i>solid / flexible / AWG</i>		
	<i>without wire protector</i>	0,75 - 4 mm ² / 0,75 - 2,5 mm ² / 18 - 12 AWG	
	<i>with wire protector</i>	0,34 - 2,5 mm ² / 0,34 - 2,5 mm ² / 22 - 14 AWG	
Rated Cross Section	1,5 mm ²		
Wire Stripping Length	6 mm ± 0,5 mm		
Overvoltage Category	III	III	II
Pollution Severity Level	3	2	II
Rated Voltage	160 V	160 V	320 V
Rated Impulse Voltage	2,5 kV	2,5 kV	2,5 kV
Rated Insulation Voltage	130 V acc. to EN 60998-1		
Rated Current	17,5 A		
Hole in PCB	ø 1,3 mm		
Torque	0,4 Nm		

Material

Moulding	PA, grey, V-0
Comparative Tracking Index	CTI ≥ 600
Insulating Group	I
Temperature Range	-40°C up to 100°C
Terminal body	Tin plated brass
Screw	M2,6; zinc plated steel, blue passivated
Solder pin	ø 1 mm; tin plated copper
Wire protector	Tin plated tin bronze

Approvals

	Current [A]	Voltage [V]	Group	AWG	[Nm]
	15	300	B	26 - 14	0,4
	15	300	B	26 - 14	0,4

Options / Accessories

- Consecutive numbering
- Special marking according to drawing
- Self-adhesive marking strip BST-5,00
- Longer solder pins up to 75 mm
- Up to 8 poles