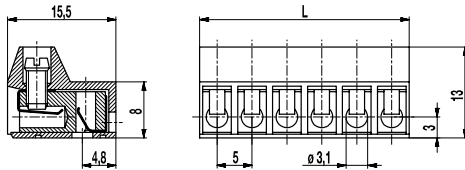
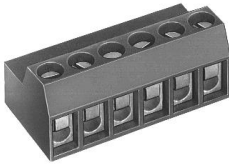


## 970-FBW(-DS)

Plug connector

Screw connection, pluggable from the bottom



The PCB plug connector 970-FBW with a pitch of 5 mm is available in 2- to 24-pole design and can be mounted side-by-side without pole loss.

The connector can be plugged on pin strips, such as the 971-SLW series. The long ribs of the pin strip offer optimum supporting surface for the socket terminal strip.

The screws are secured against self-loosening.

Upon request, the 970-FBW series is also available with additional ribs on the wire entrance side, which increase clearance and creepage distances.

### Part Numbers

No. of poles	970-FBW	970-FBW-DS	Length	PU
2	30.873.102	40.873.102	10,00	200
3	30.873.103	40.873.103	15,00	200
4	30.873.104	40.873.104	20,00	100
5	30.873.105	40.873.105	25,00	100
6	30.873.106	40.873.106	30,00	50
7	30.873.107	40.873.107	35,00	50
8	30.873.108	40.873.108	40,00	50
9	30.873.109	40.873.109	45,00	50
10	30.873.110	40.873.110	50,00	50
11	30.873.111	40.873.111	55,00	50
12	30.873.112	40.873.112	60,00	50
13	30.873.113	40.873.112	65,00	50
14	30.873.114	40.873.114	70,00	50
15	30.873.115	40.873.115	75,00	50
16	30.873.116	40.873.116	80,00	50

further number of poles on request

### General Information

Pitch	5 mm
No. of poles	2 - 24
Usable with	pin strips 971-FBWP, 971-SLW, single pins LST-1,3-6,5




### Technical Data

Clamping Range	<i>solid / flexible / AWG</i>		
<i>without wire protector</i>	1 - 6 mm <sup>2</sup> / 1 - 4 mm <sup>2</sup> / 16 - 10 AWG		
<i>with wire protector</i>	0,75 - 4 mm <sup>2</sup> / 0,75 - 2,5 mm <sup>2</sup> / 18 - 12 AWG		
Rated Cross Section	2,5 mm <sup>2</sup>		
Wire Stripping Length	5,5 mm ± 0,5 mm		
Overvoltage Category	III	III	II
Pollution Severity Level	3	2	2
Rated Voltage	250 V (200 V)	320 V	630 V (400 V)
Rated Impulse Voltage	4 kV	4 kV	4 kV
Rated Current	6 A		
Torque	0,5 Nm		
Other specifications	Voltage data in brackets are valid for 13-24 poles types. 2-12 poles types are "no-flame" acc. to glow-wire test.		

### Material

Moulding	PA, grey, V-0
Comparative Tracking Index	2-12 poles: CTI ≥ 600; 13-24 poles: CTI 400
Insulating Group	2-12 poles: I; 13-24 poles: II
Temperature Range	-40°C up to 100°C
Terminal body	Tin plated brass
Screw	M3; zinc plated steel, blue passivated
Wire protector	Tin plated tin bronze
Spring	Stainless strip steel

### Approvals

	Current [A]	Voltage [V]	Group	AWG	[Nm]
	20	300	B	22-12 [1]	0,51
	10	300	D	22-12 [1]	0,51
	20	300	B	26 - 12	0,51
	10	300	D, E	26 - 12	0,51
	13,5	200		2,5 [2]	

[1] Min No. 26 AWG for factory-wiring only

[2] Acc. to IEC 60947-7-4 und IEC 60947-1

### Options / Accessories

- Consecutive numbering
- Special marking according to drawing
- Self-adhesive marking strip BST-5,00
- Pitch of 10 mm for larger clearance and creepage distances
- Version with extended wire entrance
- Double wire protector as bridge
- Plug connector 971-RFBS(-DS) with ribs at wire entry and fitting locking plate