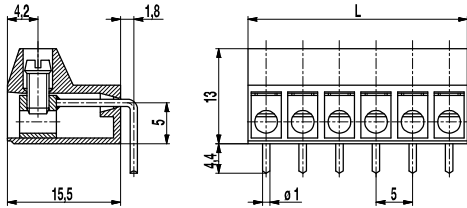
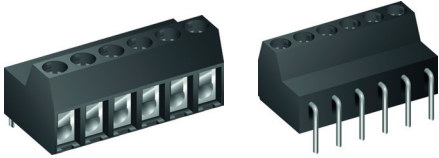


PCB connector

970-LH(-DS)

Screw connection, right angle solder pin, pottable



The 970-LH series PCB screw connector with a pitch of 5 mm features an angled solder pin is particularly suited for potting printed circuits. For such potting applications, the solder pin is sealed at the housing opening against seeping casting resin. This PCB screw connector is available in 2- to 12-pole design and can be mounted side-by-side without pole loss.

Wire protection in DS-design reliably prevents damage to stranded wires by the screw.

The wire entrance is parallel to the PCB whereas the casting resin surface is vertical to the wire entrance. Version 971-LH alternatively provides wire entrance vertical to the PCB.

Part Numbers

No. of poles	970-LH	970-LH-DS	Length	Pcs
2	10.873.402	20.873.402	10,00	100
3	10.873.403	20.873.403	15,00	100
4	10.873.404	20.873.404	20,00	100
5	10.873.405	20.873.405	25,00	500
6	10.873.406	20.873.406	30,00	100
7	10.873.407	20.873.407	35,00	50
8	10.873.408	20.873.408	40,00	50
9	10.873.409	20.873.409	45,00	50
10	10.873.410	20.873.410	50,00	50
11	10.873.411	20.873.411	55,00	50
12	10.873.412	20.873.412	60,00	50

General Information

Pitch	5 mm
No. of poles	2 - 12

Technical Data

Clamping Range	<i>solid / flexible / AWG</i>		
<i>without wire protector</i>	1 - 6 mm ² / 1 - 2,5 mm ² / 16 - 12 AWG		
<i>with wire protector</i>	0,75 - 4 mm ² / 0,75 - 2,5 mm ² / 18 - 12 AWG		
Rated Cross Section	2,5 mm ²		
Wire Stripping Length	8 mm ± 0,5 mm		
Overvoltage Category	III	III	II
Pollution Severity Level	3	2	2
Rated Voltage	250 V	320 V	630 V
Rated Impulse Voltage	4 kV	4 kV	4 kV
Rated Insulation Voltage	250 V acc. to EN 60998-1		
Rated Current	24 A		
Hole in PCB	ø 1,3 mm		
Torque	0,5 Nm		

Material

Moulding	PA, grey, V-0
Comparative Tracking Index	CTI ≥ 600
Insulating Group	I
Temperature Range	-40°C up to 100°C
Terminal body	Tin plated brass
Screw	M3; zinc plated steel, blue passivated
Solder pin	ø 1 mm; tin plated copper
Wire protector	Tin plated tin bronze

Approvals

	Current	Voltage	Group	AWG	Nm
	20	300	B	22-12 [1]	0,51
	10	300	D	22-12 [1]	0,51
	20	300	B	26 - 12	0,51
	10	300	D, E	26 - 12	0,51
	Current	Voltage	mm ²		
	24	400	2,5		

[1] Min No. 26 AWG for factory-wiring only

Options / Accessories

- Consecutive numbering
- Special marking according to drawing
- Self-adhesive marking strip BST-5,00
- Other solder pin lengths and bending positions on request
- Version with extended wire entrance
- Version with larger clamping range
- Double wire protector as bridge