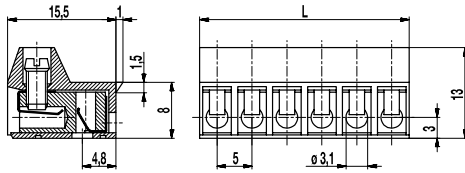
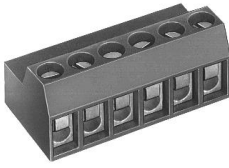


## 970-NFBW(-DS)

Plug connector

Screw connection, with latch nose



The PCB plug connector 970-NFBW with a pitch of 5 mm is available in 2- to 12-pole design and can be mounted side-by-side without pole loss.

The connector can be plugged on pin strips, such as the 971-SLW series. The long ribs of the pin strip offer optimum supporting surface for the socket terminal strip. The 970-NFBW series has an additional rear latch nose. Plugging the 970-NFBW series on the mating pin strip 971-FBWP provides a vibration-proof connection.

The screws are secured against self-loosening.

### Part Numbers

| No. of poles | 970-NFBW   | 970-NFBW-DS | Length | PU  |
|--------------|------------|-------------|--------|-----|
| 2            | 30.873.142 | 40.873.142  | 10,00  | 200 |
| 3            | 30.873.143 | 40.873.143  | 15,00  | 200 |
| 4            | 30.873.144 | 40.873.144  | 20,00  | 100 |
| 5            | 30.873.145 | 40.873.145  | 25,00  | 100 |
| 6            | 30.873.146 | 40.873.146  | 30,00  | 50  |
| 7            | 30.873.147 | 40.873.147  | 35,00  | 50  |
| 8            | 30.873.148 | 40.873.148  | 40,00  | 50  |
| 9            | 30.873.149 | 40.873.149  | 45,00  | 50  |
| 10           | 30.873.150 | 40.873.150  | 50,00  | 50  |
| 11           | 30.873.151 | 40.873.151  | 55,00  | 50  |
| 12           | 30.873.152 | 40.873.152  | 60,00  | 50  |

### General Information

|              |  |
|--------------|--|
| Pitch        | 5 mm   |
| No. of poles | 2 - 12   |
| Usable with  | pin strip 971-FBWP, 971-SLW, single pins LST-1,3x6,5 |



### Technical Data

|                               |   |       |       |
|-------------------------------|---|-------|-------|
| Clamping Range                | <i>solid / flexible / AWG</i>                                       |       |       |
| <i>without wire protector</i> | 1 - 6 mm <sup>2</sup> / 1 - 4 mm <sup>2</sup> / 16 - 10 AWG         |       |       |
| <i>with wire protector</i>    | 0,75 - 4 mm <sup>2</sup> / 0,75 - 2,5 mm <sup>2</sup> / 18 - 12 AWG |       |       |
| Rated Cross Section           | 2,5 mm <sup>2</sup>   |       |       |
| Wire Stripping Length         | 5,5 mm ± 0,5 mm   |       |       |
| Overvoltage Category          | III   | III   | II    |
| Pollution Severity Level      | 3   | 2     | 2     |
| Rated Voltage                 | 250 V   | 320 V | 630 V |
| Rated Impulse Voltage         | 4 kV  | 4 kV  | 4 kV  |
| Rated Insulation Voltage      | 250 V acc. to EN 60998-1  |       |       |
| Rated Current                 | 6 A   |       |       |
| Torque                        | 0,5 Nm  |       |       |

### Material

|                            |  |
|----------------------------|--|
| Moulding                   | PA, grey, V-0                          |
| Comparative Tracking Index | CTI ≥ 600                              |
| Insulating Group           | I                                      |
| Temperature Range          | -40°C up to 100°C                      |
| Terminal body              | Tin plated brass                       |
| Screw                      | M3; zinc plated steel, blue passivated |
| Wire protector             | Tin plated tin bronze                  |
| Spring                     | Stainless strip steel                  |

### Approvals

|   | Current [A] | Voltage [V] | Group | AWG       | [Nm] |
|---|-------------|-------------|-------|-----------|------|
|  | 20          | 300         | B     | 22-12 [1] | 0,51 |
|   | 10          | 300         | D     | 22-12 [1] | 0,51 |
|  | 20          | 300         | B     | 26 - 12   | 0,4  |
|   | 10          | 300         | D, E  | 26 - 12   | 0,4  |

[1] Min No. 26 AWG for factory-wiring only

### Options / Accessories

- Consecutive numbering
- Special marking according to drawing
- Self-adhesive marking strip BST-5,00
- Pitch of 10 mm for larger clearance and creepage distances
- Version with extended wire entrance
- Double wire protector as bridge