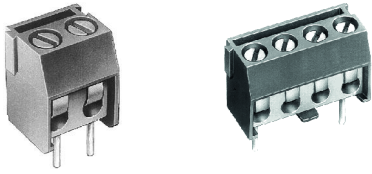


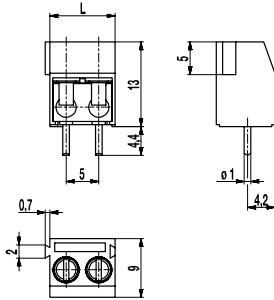
970-TX..(-DS)

PCB connector

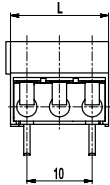
Screw connection, 2 to 4 screw connections at only one pole, interlocking



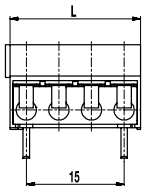
970-TX2-DS/01



970-TX3-DS/01



970-TX4-DS/01



The PCB screw connector 970-TX with a „pitch“ of 5 mm has 2 to 4 screw connections at only one pole and can be used e.g. as potential distributors. This allows to loop through earth conductors easily.

Lateral latching elements allow to latch this type of screw connector to terminal strips of any length.

Wire protection in DS-design reliably prevents damage to stranded wires by the screw.

A not latchable version with 2 to 12 screw connections at one pole is available as type 970-X..

NOTE:

The pole numbers indicated in the article number do not designate the actual number of poles but the number of screw connections instead!

Part Numbers

No. of poles	970-TX..	970-TX..-DS	Length	PU
2	10.872.619	20.872.619	10,00	250
3	10.872.620	20.872.620	15,00	250
4	10.872.621	20.872.621	20,00	200

General Information

Pitch	5 mm
No. of poles	1




Technical Data

Clamping Range	<i>solid / flexible / AWG</i>		
	<i>without wire protector</i>	1 - 6 mm ² / 1 - 2,5 mm ² / 16 - 12 AWG	
	<i>with wire protector</i>	0,75 - 4 mm ² / 0,75 - 2,5 mm ² / 18 - 12 AWG	
Rated Cross Section	2,5 mm ²		
Wire Stripping Length	6,5 mm ± 0,5 mm		
Overvoltage Category	III	III	II
Pollution Severity Level	3	2	2
Rated Voltage	250 V	320 V	630 V
Rated Impulse Voltage	4 kV	4 kV	4 kV
Rated Current	24 A		
Hole in PCB	ø 1,3 mm		
Torque	0,5 Nm		

Material

Moulding	PA, grey, V-0
Comparative Tracking Index	CTI ≥ 600
Insulating Group	I
Temperature Range	-40°C up to 100°C
Terminal body	Tin plated brass
Screw	M3; zinc plated steel, blue passivated
Solder pin	ø 1 mm; tin plated copper
Wire protector	Tin plated tin bronze

Approvals

	Current [A]	Voltage [V]	Group	AWG	[Nm]
	20	300	B	22-12 [1]	0,51
	10	300	D	22-12 [1]	0,51
	20	300	B	26 - 12	0,51
	10	300	D, E	26 - 12	0,51
	Current [A]	Voltage [V]	[mm ²]		
	24	250	2,5 [2]		

[1] Min No. 26 AWG for factory-wiring only

[2] Acc. to IEC 60947-7-4 und IEC 60947-1

Options / Accessories

- Consecutive numbering
- Special marking according to drawing
- Self-adhesive marking strip BST-5,00
- Longer P.C. pins up to 95 mm
- P.C. pins with different lengths between each other
- Version with extended wire entrance
- Other position of P.C. pins